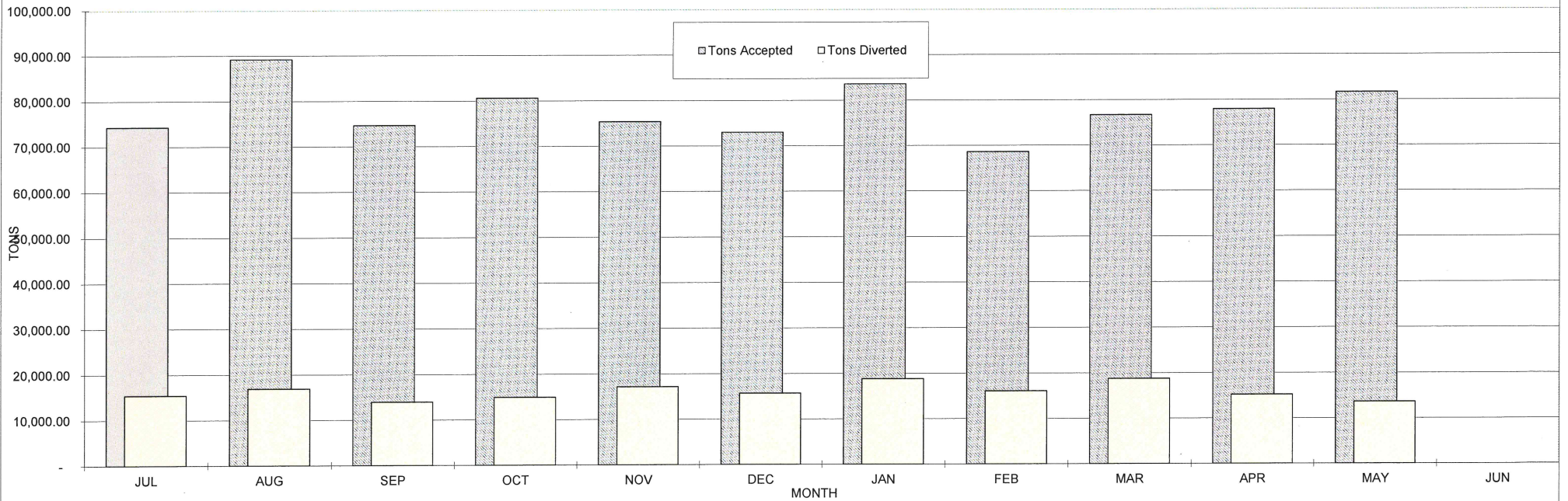


**MONTEREY REGIONAL WASTE MANAGEMENT DISTRICT  
OPERATING REPORT (IN TONS)  
FOR  
FISCAL YEAR 2018-2019**

**For the Eleven Months Ended May 31, 2019**

PERIOD	Franchised Haulers		Commercial and Industrial Chgs		Cash Customers		Regional Waste		Total Solid Waste Accepted		Diverted Materials		Percent Diverted		Total Landfilled	
	17-18	18-19	17-18	18-19	17-18	18-19	17-18	18-19	17-18	18-19	17-18	18-19	17-18	18-19	17-18	18-19
<b>FOR THE MONTH OF :</b>																
JULY	11,744	16,725	7,239	7,842	7,427	9,107	44,558	40,597	70,968	74,271	(24,084)	(15,421)	34%	21%	46,884	58,850
AUGUST	12,691	17,437	8,969	10,031	8,231	10,042	42,004	51,679	71,894	89,189	(12,432)	(16,885)	17%	19%	59,463	72,304
SEPTEMBER	11,419	14,904	6,388	6,355	7,595	10,224	39,682	43,157	65,084	74,641	(11,418)	(13,950)	18%	19%	53,666	60,691
OCTOBER	11,360	16,742	7,078	8,954	7,550	9,252	40,116	45,651	66,104	80,599	(8,136)	(14,938)	12%	19%	57,968	65,661
NOVEMBER	11,728	16,048	6,347	10,891	6,432	7,879	40,634	40,545	65,141	75,362	(8,327)	(17,151)	13%	23%	56,814	58,211
DECEMBER	10,315	15,634	6,524	10,360	6,495	8,068	34,386	38,932	57,720	72,994	(6,166)	(15,689)	11%	21%	51,554	57,305
JANUARY	11,396	16,918	8,419	11,330	6,487	7,950	42,570	47,371	68,872	83,568	(10,601)	(18,784)	15%	22%	58,272	64,784
FEBRUARY	10,035	15,199	5,430	7,130	6,149	9,224	36,916	37,042	58,530	68,596	(8,769)	(16,078)	15%	23%	49,761	52,518
MARCH	11,155	15,974	4,813	10,092	6,311	10,262	38,487	40,345	60,766	76,673	(10,763)	(18,754)	18%	24%	50,004	57,919
APRIL	15,272	17,215	8,139	9,635	7,095	10,773	39,381	40,305	69,886	77,929	(13,682)	(15,184)	20%	19%	56,204	62,745
MAY	16,390	18,201	7,014	9,413	7,657	9,911	36,846	44,100	67,907	81,625	(15,990)	(13,625)	24%	17%	51,917	68,000
JUNE	16,118		7,063		7,942		37,612		68,735	-	(15,566)		23%	N/A	53,169	-
<b>YEAR-TO-DATE TOTALS:</b>	<b>149,622</b>	<b>180,996</b>	<b>83,422</b>	<b>102,033</b>	<b>85,372</b>	<b>102,693</b>	<b>473,193</b>	<b>469,724</b>	<b>791,609</b>	<b>855,446</b>	<b>(145,933)</b>	<b>(176,458)</b>	<b>18%</b>	<b>21%</b>	<b>645,676</b>	<b>678,987</b>
<b>FULL YEAR TOTALS:</b>	<b>149,622</b>	<b>180,996</b>	<b>83,422</b>	<b>102,033</b>	<b>85,372</b>	<b>102,693</b>	<b>473,193</b>	<b>469,724</b>	<b>791,609</b>	<b>855,446</b>	<b>(145,933)</b>	<b>(176,458)</b>	<b>18%</b>	<b>21%</b>	<b>645,676</b>	<b>678,987</b>

**TOTAL SOLID WASTE ACCEPTED AND TOTAL SOLID WASTE DIVERTED**

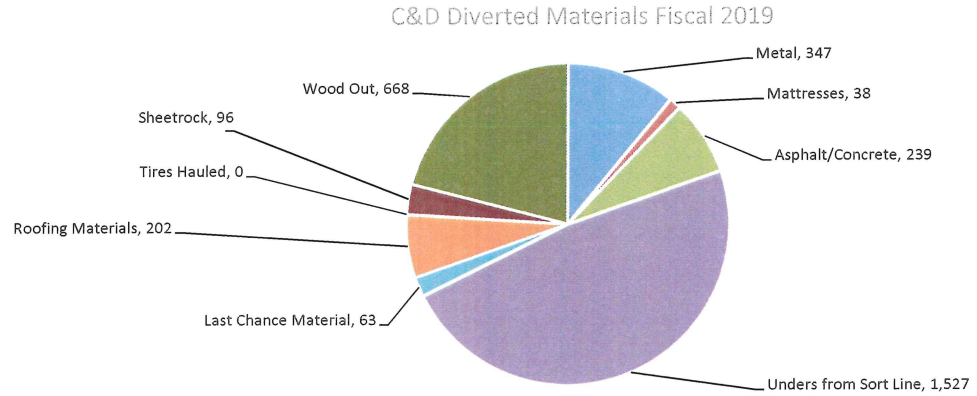


**MONTEREY REGIONAL WASTE MANAGEMENT DISTRICT  
RECYCLING REPORT  
MAY 2019**

Fiscal 2019 MRF Diverted Materials - Eleven Months Ended May 31, 2019

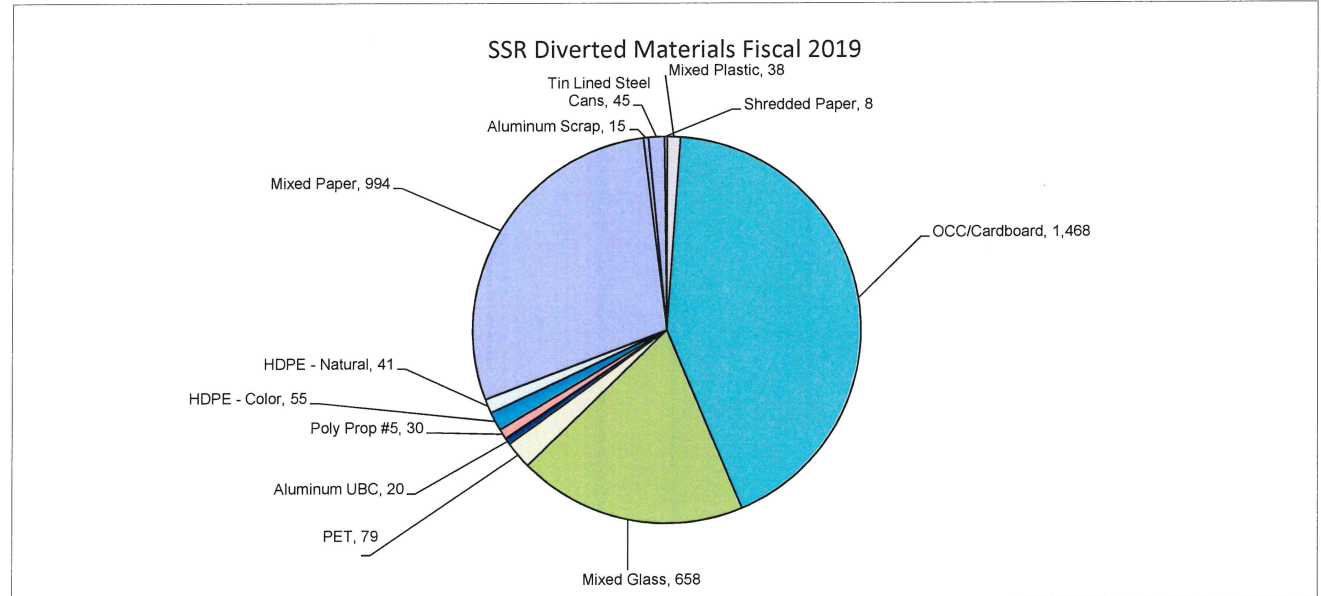
**C&D Diverted Materials**

	Tons	
Metal	347	10.9%
Mattresses	38	1.2%
Asphalt/Concrete	239	7.5%
Unders from Sort Line	1,527	48.0%
Last Chance Material	63	2.0%
Roofing Materials	202	6.4%
Tires Hauled	0	0.0%
Sheetrock	96	3.0%
Wood Out	668	21.0%
<b>Total</b>	<b>3,181</b>	
<b>C&amp;D Percent Diversion</b>	<b>92.0%</b>	



**SSR Diverted Materials**

	Tons	
Mixed Plastic	38	1.1%
OCC/Cardboard	1,468	42.5%
Mixed Glass	658	19.1%
PET	79	2.3%
Aluminum UBC	20	0.6%
Poly Prop #5	30	0.9%
HDPE - Color	55	1.6%
HDPE - Natural	41	1.2%
Mixed Paper	994	28.8%
Aluminum Scrap	15	0.4%
Tin Lined Steel Cans	45	1.3%
Shredded Paper	8	0.2%
<b>Total</b>	<b>3,449</b>	
<b>SSR Percent Diversion</b>	<b>57.3%</b>	

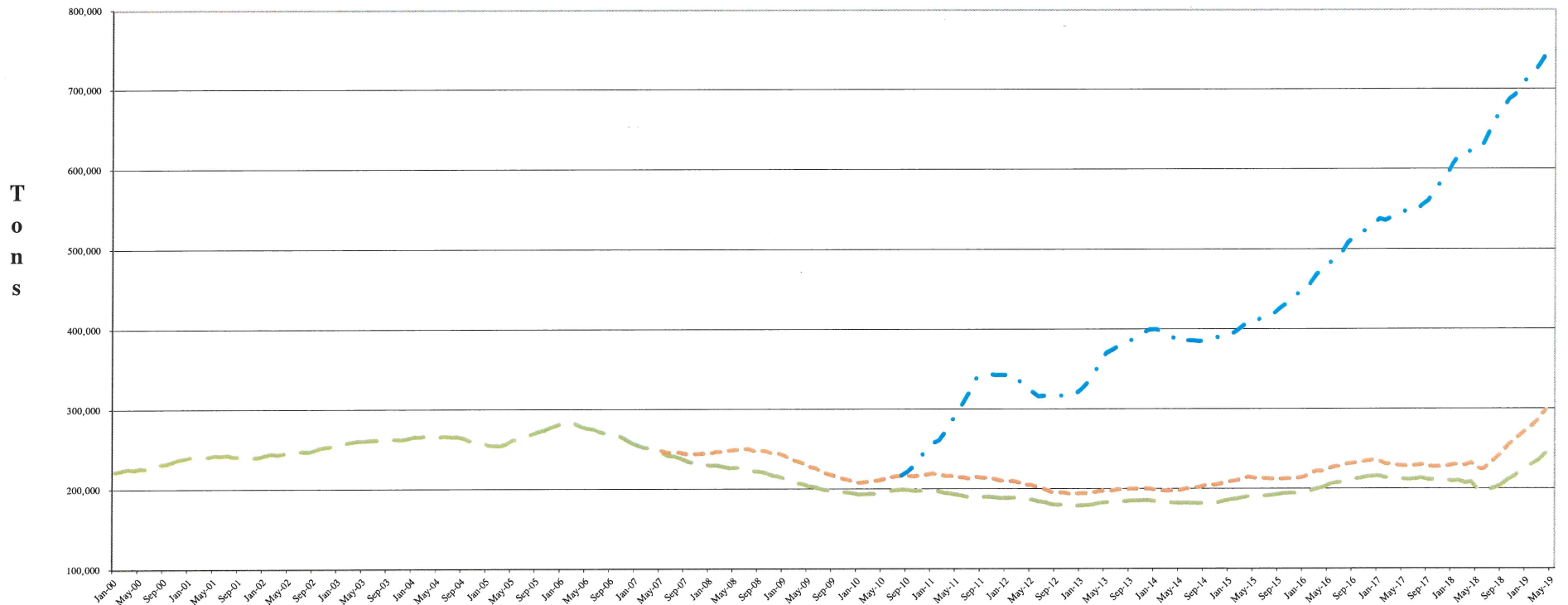


**Monterey Regional Waste Management District**

SITE Tonnage	Apr 2019	May 2019	F2019 YTD	Fiscal 2019 Q1	Fiscal 2019 Q2	Fiscal 2019 Q3
<b>Accepted Materials</b>						
Refuse - Landfill	13,011.90	12,242.13	131,155.08	38,214.16	36,214.38	31,472.51
Refuse - Landfill - Regional Waste	38,008.95	41,909.69	414,956.74	117,577.40	108,278.84	109,181.86
ADC - Regional Waste	2,129.74	2,406.25	51,852.51	16,388.96	16,296.45	14,631.11
Asphalt/Concrete	2,728.87	2,424.27	25,534.08	7,500.25	6,803.22	6,077.47
Clean Soil	4,834.18	3,499.00	48,169.93	9,887.59	13,221.54	16,727.62
Free Recycling/ Z Wall	56.15	41.33	533.27	185.89	112.42	137.48
Food Waste	669.98	720.79	6,667.98	1,660.48	1,773.46	1,843.27
Greenwaste	4,813.87	4,525.58	43,950.00	10,671.76	9,633.86	14,304.93
Hazardous Waste	-	0.56	3.92	-	1.68	-
Problem Waste	421.46	312.69	4,101.35	507.80	2,174.98	684.42
Contaminated Soil	-	-	46.60	-	46.60	-
Sludge	350.59	1,815.57	10,645.77	3,865.12	3,470.92	1,143.57
Buy Back Center	154.73	190.81	1,727.51	359.85	507.05	515.07
Liquid Waste	17.99	29.16	1,647.94	883.54	709.70	7.55
Single Stream	5,085.39	5,783.55	55,805.73	14,341.13	15,322.99	15,272.67
Self Haul	5,937.69	6,112.89	61,278.87	16,383.17	15,241.72	17,603.40
<b>Total Accepted Materials</b>	<b>78,221.49</b>	<b>82,014.27</b>	<b>858,077.27</b>	<b>238,427.10</b>	<b>229,809.80</b>	<b>229,604.61</b>
<b>Diverted Materials</b>						
Metal	405.53	347.45	4,225.50	1,236.47	1,109.84	1,126.21
Mixed Plastic	91.38	34.40	622.78	214.43	113.21	169.36
OCC/Cardboard	1,327.91	1,349.82	13,700.98	3,611.40	3,510.06	3,901.79
Mixed Glass	618.94	657.53	7,089.76	1,930.94	1,972.90	1,909.45
PET	87.95	88.84	845.36	190.82	256.66	221.09
Aluminum UBC	23.68	21.09	209.17	29.01	70.95	64.44
Poly Prop #5	-	40.57	275.32	60.38	93.74	80.63
HDPE - Color	84.83	40.74	610.56	177.70	121.16	186.13
HDPE - Natural	43.10	40.31	396.03	79.64	85.70	147.28
Mixed Paper	848.52	955.47	10,771.87	2,877.93	2,578.90	3,511.05
Aluminum scrap	-	14.83	60.28	-	0.79	44.66
Mattresses	34.44	37.82	391.52	114.17	101.04	104.05
Tin Lined Steel Cans	67.79	23.44	468.27	86.83	126.21	164.00
Shredded Paper	22.14	-	88.35	22.04	21.98	22.19
ADC	3,311.77	3,933.42	63,476.37	18,983.66	19,051.10	18,196.42
Clean Soil	4,834.18	3,499.00	48,169.93	9,887.59	13,221.54	16,727.62
Last Chance Material	54.21	63.42	629.97	205.50	156.49	150.35
Tires Hauled	27.36	-	117.25	37.85	26.72	25.32
Asphalt Roof	141.32	202.01	1,762.84	803.51	396.00	220.00
Asphalt/Concrete	2,928.18	2,663.75	27,523.01	8,058.49	7,321.92	6,550.67
Sheetrock	78.33	95.58	880.18	245.62	244.20	216.45
Food Waste	669.98	720.79	6,667.98	1,660.48	1,773.46	1,843.27
Green & Wood Waste	5,048.94	5,193.51	48,313.82	11,943.65	10,773.95	15,353.77
<b>Total Diverted Materials</b>	<b>20,750.48</b>	<b>20,023.79</b>	<b>237,297.10</b>	<b>62,458.10</b>	<b>63,128.52</b>	<b>70,936.20</b>
<b>Landfilled</b>	<b>57,471.01</b>	<b>61,990.48</b>	<b>620,780.18</b>	<b>175,969.00</b>	<b>166,681.28</b>	<b>158,668.41</b>
<b>% Diverted - All Tonnage minus Reg Waste</b>	<b>51.6%</b>	<b>49.9%</b>	<b>53.6%</b>	<b>51.7%</b>	<b>51.9%</b>	<b>58.9%</b>
<b>MRF Tonnage</b>						
<b>MRF - Accepted Materials</b>						
<b>C&amp;D</b>						
MRF C&D Net of Material Landfilled	3,339.60	3,455.88	37,425.89	10,591.57	9,044.32	10,994.52
<b>SSR</b>						
MRF SSR Net of Material Landfilled	5,296.27	6,015.69	58,066.27	14,886.87	15,936.55	15,930.89
<b>Total MRF Accepted Materials</b>	<b>8,635.87</b>	<b>9,471.57</b>	<b>95,492.15</b>	<b>25,478.43</b>	<b>24,980.87</b>	<b>26,925.41</b>
<b>MRF - Diverted Materials</b>						
<b>C&amp;D</b>						
Metal	405.53	347.45	4,225.50	1,236.47	1,109.84	1,126.21
Mattresses	34.44	37.82	391.52	114.17	101.04	104.05
Asphalt/Concrete	199.31	239.48	2,231.00	687.18	631.83	473.20
Unders from Sort Line	1,182.03	1,527.17	11,646.50	2,594.70	2,777.29	3,565.31
Last Chance Material	54.21	63.42	629.97	205.50	156.49	150.35
Roofing Materials	141.32	202.01	1,762.84	803.51	396.00	220.00
Tires Hauled	27.36	-	117.25	37.85	26.72	25.32
Sheetrock	78.33	95.58	880.18	245.62	244.20	216.45
Wood Out	235.07	667.93	4,363.81	1,271.89	1,140.09	1,048.83
<b>Total C&amp;D Diverted</b>	<b>2,357.60</b>	<b>3,180.86</b>	<b>26,248.57</b>	<b>7,196.89</b>	<b>6,583.50</b>	<b>6,929.72</b>
<b>SSR</b>						
Mixed Plastic	29.18	37.70	531.08	224.33	136.31	103.56
OCC/Cardboard	1,358.51	1,467.72	14,306.08	3,648.30	3,797.16	4,034.39
Mixed Glass	620.44	657.53	7,092.76	1,932.44	1,972.90	1,909.45
PET	81.55	79.04	833.26	230.02	219.96	222.69
Aluminum UBC	21.68	19.59	220.97	59.51	57.45	62.74
Poly Prop #5	22.40	29.77	278.52	87.58	57.74	81.03
HDPE - Color	52.43	54.54	657.26	176.50	165.56	208.23
HDPE - Natural	38.90	40.91	338.23	82.64	56.90	118.88
Mixed Paper	710.02	994.47	11,071.47	2,881.83	2,907.50	3,577.65
Aluminum scrap	-	14.83	60.28	-	0.79	44.66
Tin Lined Steel Cans	47.09	45.04	519.87	108.43	135.21	184.10
Shredded Paper	16.14	8.30	67.55	16.14	17.58	9.39
<b>Total Single Stream Recycling Diverted</b>	<b>2,998.34</b>	<b>3,449.44</b>	<b>35,977.33</b>	<b>9,447.72</b>	<b>9,525.06</b>	<b>10,556.77</b>
<b>Total MRF Diverted Materials</b>	<b>5,355.94</b>	<b>6,630.30</b>	<b>62,225.90</b>	<b>16,644.61</b>	<b>16,108.56</b>	<b>17,486.49</b>
<b>C&amp;D Percent Diversion</b>	<b>70.6%</b>	<b>92.0%</b>	<b>70.1%</b>	<b>67.9%</b>	<b>72.8%</b>	<b>63.0%</b>
<b>Single Stream Recycling Percent Diversion</b>	<b>56.6%</b>	<b>57.3%</b>	<b>62.0%</b>	<b>63.5%</b>	<b>59.8%</b>	<b>66.3%</b>
<b>Percent Diversion - Entire MRF</b>	<b>62.0%</b>	<b>70.0%</b>	<b>65.2%</b>	<b>65.3%</b>	<b>64.5%</b>	<b>64.9%</b>



# MRWMD Landfill Rolling 12 Month Refuse



RW = Regional Waste Tonnages from Santa Cruz County and the Cities of Watsonville, Capitola and Scotts Valley  
 GWR = Regional Waste Tonnage from GreenWaste Recovery/Zanker

