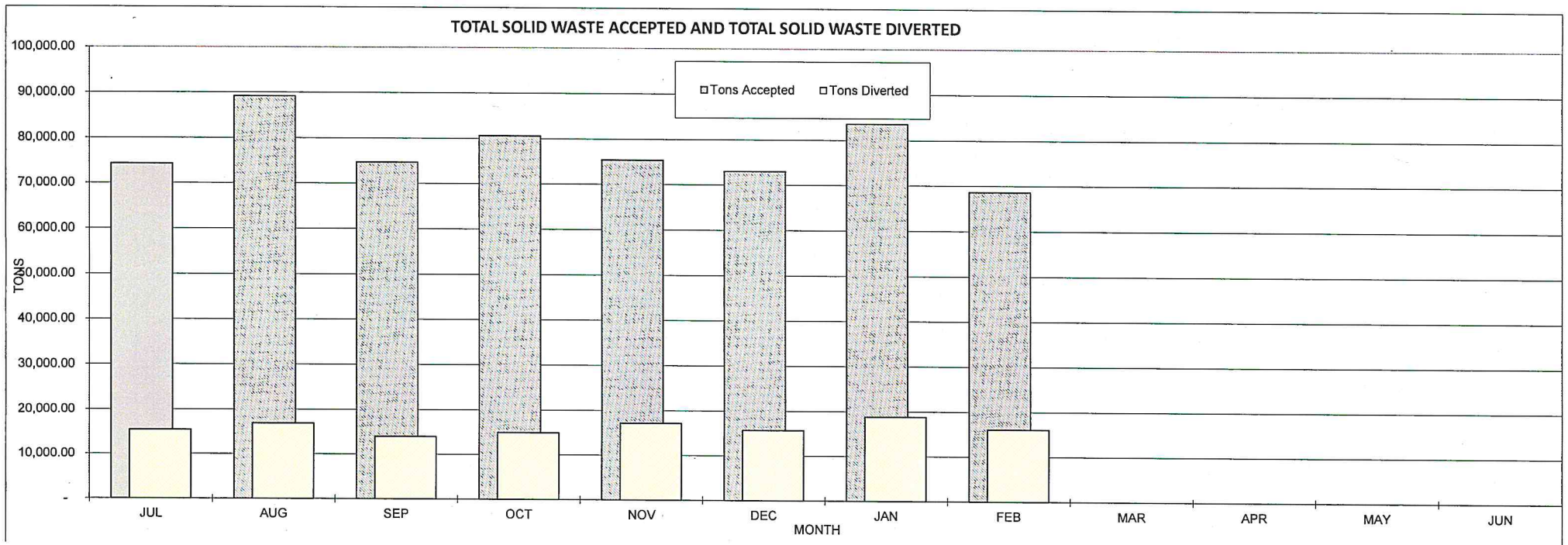


**MONTEREY REGIONAL WASTE MANAGEMENT DISTRICT  
OPERATING REPORT (IN TONS)  
FOR  
FISCAL YEAR 2018-2019**

**For the Seven Months Ended January 31, 2019**

PERIOD	Franchised Haulers		Commercial and Industrial Chgs		Cash Customers		Regional Waste		Total Solid Waste Accepted		Diverted Materials		Percent Diverted		Total Landfilled	
	17-18	18-19	17-18	18-19	17-18	18-19	17-18	18-19	17-18	18-19	17-18	18-19	17-18	18-19	17-18	18-19
<b>FOR THE MONTH OF :</b>																
JULY	11,744	16,725	7,239	7,842	7,427	9,107	44,558	40,597	70,968	74,271	(24,084)	(15,421)	34%	21%	46,884	58,850
AUGUST	12,691	17,437	8,969	10,031	8,231	10,042	42,004	51,679	71,894	89,189	(12,432)	(16,885)	17%	19%	59,463	72,304
SEPTEMBER	11,419	14,904	6,388	6,355	7,595	10,224	39,682	43,157	65,084	74,641	(11,418)	(13,950)	18%	19%	53,666	60,691
OCTOBER	11,360	16,742	7,078	8,954	7,550	9,252	40,116	45,651	66,104	80,599	(8,136)	(14,938)	12%	19%	57,968	65,661
NOVEMBER	11,728	16,048	6,347	10,891	6,432	7,879	40,634	40,545	65,141	75,362	(8,327)	(17,151)	13%	23%	56,814	58,211
DECEMBER	10,315	15,634	6,524	10,360	6,495	8,068	34,386	38,932	57,720	72,994	(6,166)	(15,689)	11%	21%	51,554	57,305
JANUARY	11,396	16,918	8,419	11,330	6,487	7,950	42,570	47,371	68,872	83,568	(10,601)	(18,784)	15%	22%	58,272	64,784
FEBRUARY	10,035	15,199	5,430	7,130	6,149	9,224	36,916	37,042	58,530	68,596	(8,769)	(16,078)	15%	23%	49,761	52,518
MARCH	11,155		4,813		6,311		38,487		60,766	-	(10,763)		18%	N/A	50,004	-
APRIL	15,272		8,139		7,095		39,381		69,886	-	(13,682)		20%	N/A	56,204	-
MAY	16,390		7,014		7,657		36,846		67,907	-	(15,990)		24%	N/A	51,917	-
JUNE	16,118		7,063		7,942		37,612		68,735	-	(15,566)		23%	N/A	53,169	-
<b>YEAR-TO-DATE TOTALS:</b>	<b>149,622</b>	<b>129,606</b>	<b>83,422</b>	<b>72,892</b>	<b>85,372</b>	<b>71,747</b>	<b>473,193</b>	<b>344,973</b>	<b>791,609</b>	<b>619,219</b>	<b>(145,933)</b>	<b>(128,895)</b>	<b>18%</b>	<b>21%</b>	<b>645,676</b>	<b>490,324</b>
<b>FULL YEAR TOTALS:</b>	<b>149,622</b>	<b>129,606</b>	<b>83,422</b>	<b>72,892</b>	<b>85,372</b>	<b>71,747</b>	<b>473,193</b>	<b>344,973</b>	<b>791,609</b>	<b>619,219</b>	<b>(145,933)</b>	<b>(128,895)</b>	<b>18%</b>	<b>21%</b>	<b>645,676</b>	<b>490,324</b>

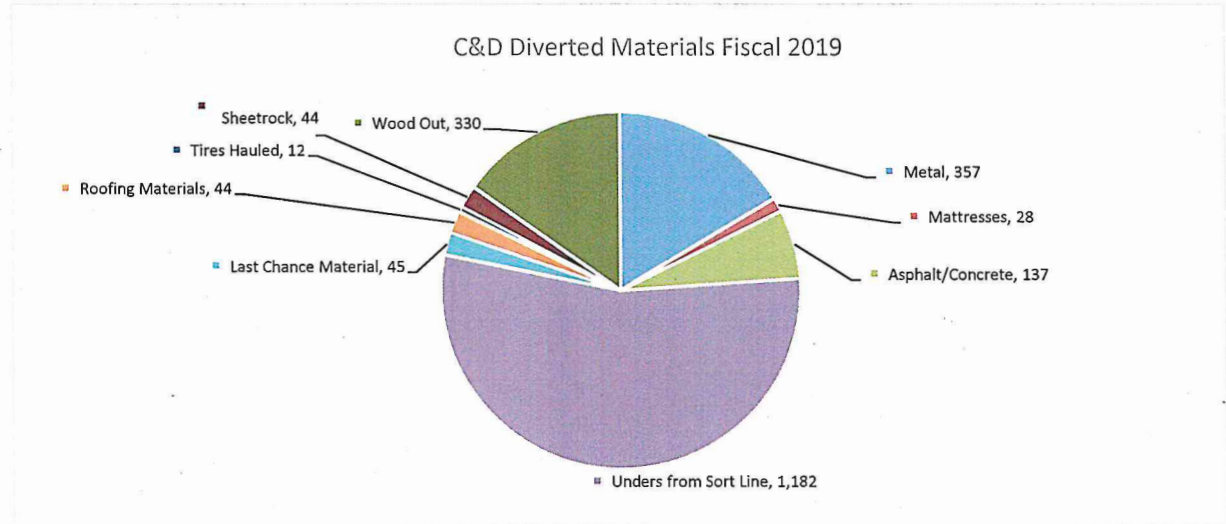


**MONTEREY REGIONAL WASTE MANAGEMENT DISTRICT  
RECYCLING REPORT  
FEBRUARY 2019**

Fiscal 2019 MRF Diverted Materials - Eight Months Ended February 28, 2019

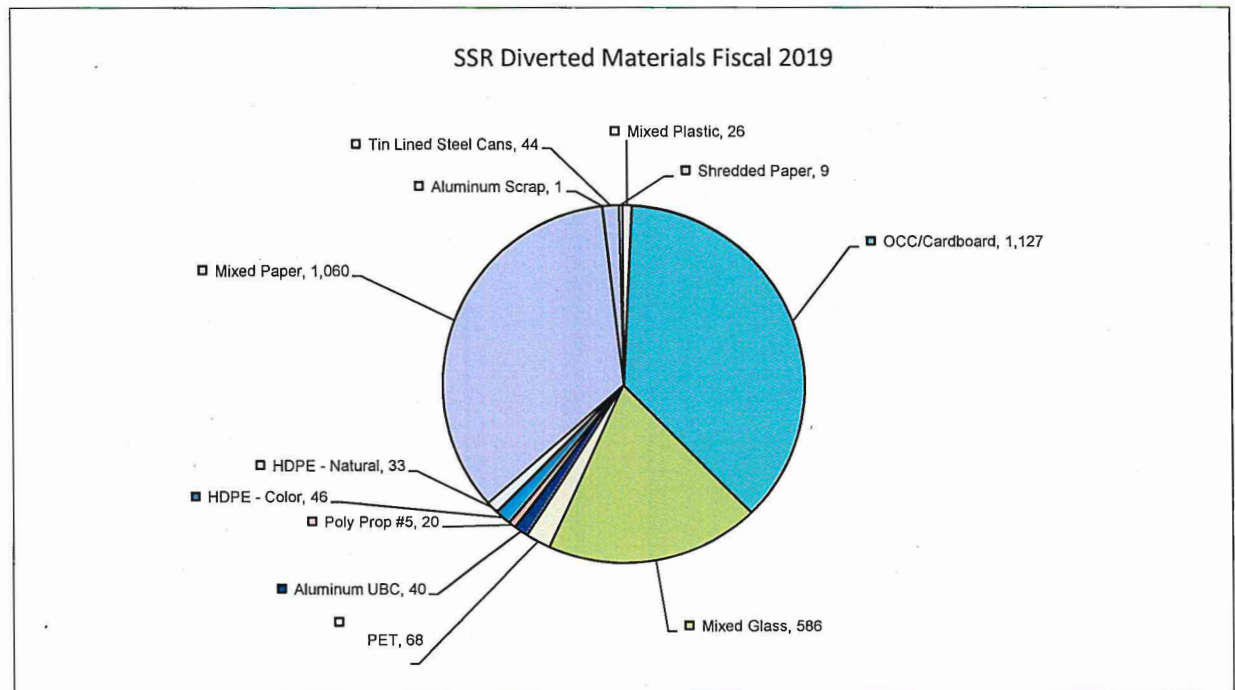
**C&D Diverted Materials**

	Tons	
Metal	357	16.4%
Mattresses	28	1.3%
Asphalt/Concrete	137	6.3%
Unders from Sort Line	1,182	54.3%
Last Chance Material	45	2.1%
Roofing Materials	44	2.0%
Tires Hauled	12	0.5%
Sheetrock	44	2.0%
Wood Out	330	15.2%
<b>Total</b>	<b>2,179</b>	
<b>C&amp;D Percent Diversion</b>		<b>63.0%</b>

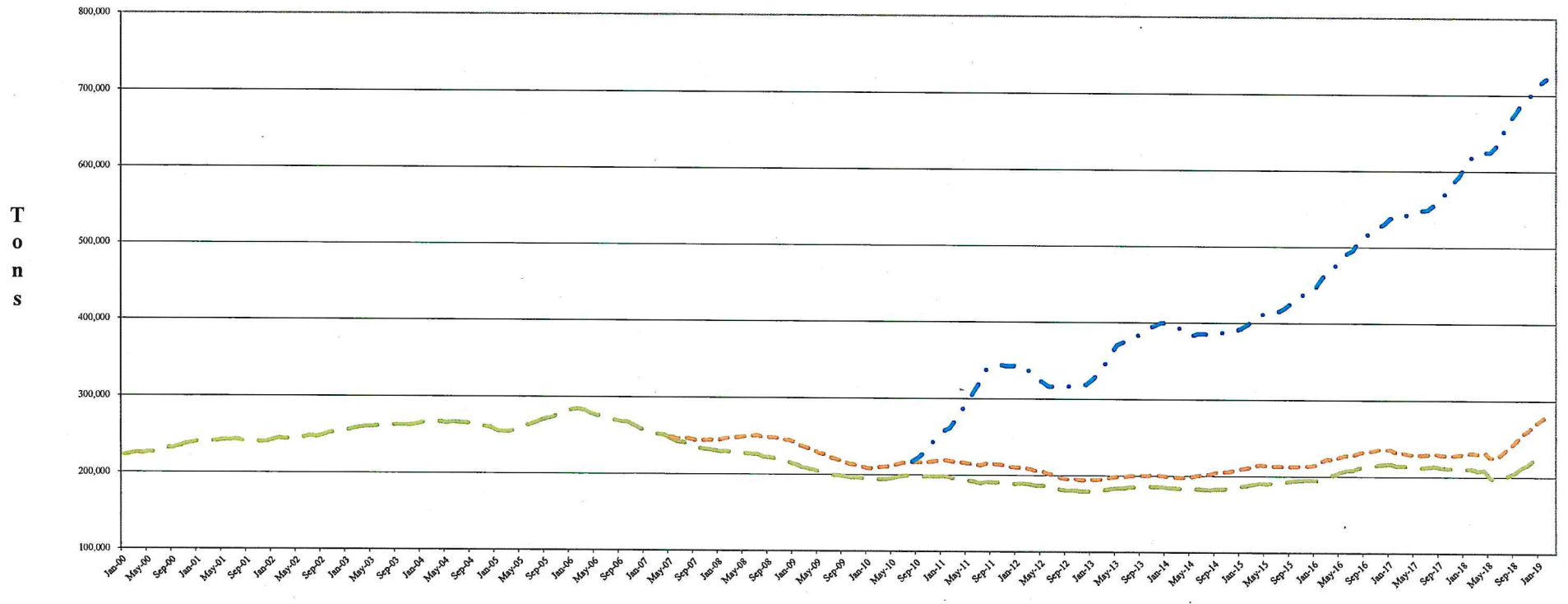


**SSR Diverted Materials**

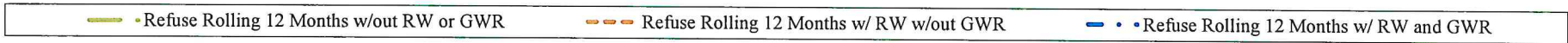
	Tons	
Mixed Plastic	26	0.8%
OCC/Cardboard	1,127	36.8%
Mixed Glass	586	19.2%
PET	68	2.2%
Aluminum UBC	40	1.3%
Poly Prop #5	20	0.7%
HDPE - Color	46	1.5%
HDPE - Natural	33	1.1%
Mixed Paper	1,060	34.6%
Aluminum Scrap	1	0.0%
Tin Lined Steel Cans	44	1.4%
Shredded Paper	9	0.3%
<b>Total</b>	<b>3,060</b>	
<b>SSR Percent Diversion</b>		<b>61.3%</b>



# MRWMD Landfill Rolling 12 Month Refuse



RW = Regional Waste Tonnages from Santa Cruz County and the Cities of Watsonville, Capitola and Scotts Valley  
 GWR = Regional Waste Tonnage from GreenWaste Recovery/Zanker





**Monterey Regional Waste Management District**

SITE Tonnage	Dec 2018	Jan 2019	Feb 2019	F2019 YTD
<b>Accepted Materials</b>				
Refuse - Landfill	11,957.40	11,203.45	9,587.94	95,219.93
Refuse - Landfill - Regional Waste	33,344.12	41,183.85	32,260.48	299,300.57
ADC - Regional Waste	5,497.20	5,901.29	4,404.46	42,991.16
Asphalt/Concrete	1,802.52	2,518.10	1,384.61	18,206.18
Clean Soil	4,545.66	5,490.91	4,585.84	33,185.88
Free Recycling/ Z Wall	34.39	62.08	31.05	391.44
Food Waste	546.46	602.45	621.34	4,657.73
Greenwaste	3,269.25	4,243.75	5,079.60	29,628.97
Hazardous Waste	0.56	-	-	1.68
Problem Waste	886.16	222.57	189.07	3,094.42
Contaminated Soil	16.50	-	-	46.60
Sludge	843.44	665.18	195.62	8,196.84
Buy Back Center	170.80	152.86	189.15	1,208.91
Liquid Waste	28.88	7.55	-	1,600.79
Single Stream	5,128.73	5,602.64	4,773.94	40,040.70
Self Haul	5,145.79	5,957.19	5,523.15	43,105.23
<b>Total Accepted Materials</b>	<b>73,217.86</b>	<b>83,813.87</b>	<b>68,826.25</b>	<b>620,877.02</b>
<b>Diverted Materials</b>				
Metal	348.14	377.39	356.74	3,080.44
Mixed Plastic	20.60	77.22	92.14	497.00
OCC/Cardboard	1,187.81	1,551.69	960.50	9,633.65
Mixed Glass	727.24	732.28	586.36	5,222.48
PET	107.05	88.09	65.29	600.86
Aluminum UBC	3.36	1.48	41.55	142.99
Poly Prop #5	18.99	20.15	19.50	193.77
HDPE - Color	39.80	101.99	20.59	421.44
HDPE - Natural	41.40	43.14	61.18	269.66
Mixed Paper	875.94	1,286.01	973.06	7,715.90
Aluminum scrap	0.79	43.50	1.16	45.45
Mattresses	30.18	36.39	28.21	279.81
Tin Lined Steel Cans	61.37	70.15	23.47	306.66
Shredded Paper	-	-	22.19	66.21
ADC	6,583.13	7,150.59	5,586.49	50,771.84
Clean Soil	4,545.66	5,490.91	4,585.84	33,185.88
Last Chance Material	51.14	51.14	45.00	458.13
Tires Hauled	-	13.78	11.54	89.89
Asphalt Roof	105.60	79.20	44.00	1,322.71
Asphalt/Concrete	1,984.52	2,663.70	1,521.11	19,565.22
Sheetrock	55.50	94.35	44.40	628.57
Food Waste	546.46	602.45	621.34	4,657.73
Green & Wood Waste	3,522.88	4,694.81	5,409.98	32,822.39
<b>Total Diverted Materials</b>	<b>20,857.56</b>	<b>25,270.41</b>	<b>21,121.64</b>	<b>171,978.68</b>
<b>Landfilled</b>	<b>52,360.30</b>	<b>58,543.46</b>	<b>47,704.61</b>	<b>448,898.35</b>
<b>% Diverted - All Tonnage minus Reg Waste</b>	<b>52.3%</b>	<b>59.3%</b>	<b>57.8%</b>	<b>53.5%</b>
<b>MRF Tonnage</b>				
<b>MRF - Accepted Materials</b>				
<b>C&amp;D</b>				
MRF C&D Net of Material Landfilled	3,480.39	3,911.19	3,459.55	27,006.63
<b>SSR</b>				
MRF Single Stream Recycling	5,128.73	5,602.64	4,773.94	40,034.79
Buy Back Center	170.80	152.86	189.15	1,208.91
Free Recycling/ Z Wall	34.39	62.08	31.05	391.44
<b>Total SSR Accepted Materials</b>	<b>5,333.92</b>	<b>5,817.58</b>	<b>4,994.14</b>	<b>41,635.14</b>
<b>Total MRF Accepted Materials</b>	<b>8,814.31</b>	<b>9,728.77</b>	<b>8,453.69</b>	<b>68,641.76</b>
<b>MRF - Diverted Materials</b>				
<b>C&amp;D</b>				
Metal	348.14	377.39	356.74	3,080.44
Mattresses	30.18	36.39	28.21	279.81
Asphalt/Concrete	182.00	145.60	136.50	1,601.11
Unders from Sort Line	1,085.93	1,249.30	1,182.03	7,803.32
Last Chance Material	51.14	51.14	45.00	458.13
Roofing Materials	105.60	79.20	44.00	1,322.71
Tires Hauled	-	13.78	11.54	89.89
Sheetrock	55.50	94.35	44.40	628.57
Wood Out	253.63	451.06	330.38	3,193.42
<b>Total C&amp;D Diverted</b>	<b>2,112.12</b>	<b>2,498.21</b>	<b>2,178.80</b>	<b>18,457.40</b>
<b>SSR</b>				
Mixed Plastic	47.60	77.22	25.54	463.40
OCC/Cardboard	1,401.11	1,526.39	1,127.00	10,098.85
Mixed Glass	727.24	732.28	586.36	5,223.98
PET	72.75	86.89	67.79	604.66
Aluminum UBC	21.36	1.38	40.05	158.39
Poly Prop #5	23.39	20.15	19.90	185.37
HDPE - Color	51.80	99.49	45.79	487.34
HDPE - Natural	-	43.14	32.98	215.66
Mixed Paper	1,169.44	1,277.51	1,059.86	8,126.70
Aluminum scrap	0.79	43.50	1.16	45.45
Tin Lined Steel Cans	52.37	69.95	44.17	357.76
Shredded Paper	5.30	-	9.39	43.11
<b>Total Single Stream Recycling Diverted</b>	<b>3,573.15</b>	<b>3,977.90</b>	<b>3,059.99</b>	<b>26,010.67</b>
<b>Total MRF Diverted Materials</b>	<b>5,685.27</b>	<b>6,476.11</b>	<b>5,238.79</b>	<b>44,468.07</b>
<b>C&amp;D Percent Diversion</b>	<b>60.7%</b>	<b>63.9%</b>	<b>63.0%</b>	<b>68.3%</b>
<b>Single Stream Recycling Percent Diversion</b>	<b>67.0%</b>	<b>68.4%</b>	<b>61.3%</b>	<b>62.5%</b>
<b>Percent Diversion - Entire MRF</b>	<b>64.5%</b>	<b>66.6%</b>	<b>62.0%</b>	<b>64.8%</b>