



Monterey Regional Waste Management District

Turning Waste Into Resources

Since 1951

Financial & Operations Review

November 2021

Board of Directors

December 17, 2021

Financial Review – November 2021

November 2021 Revenue ('000)

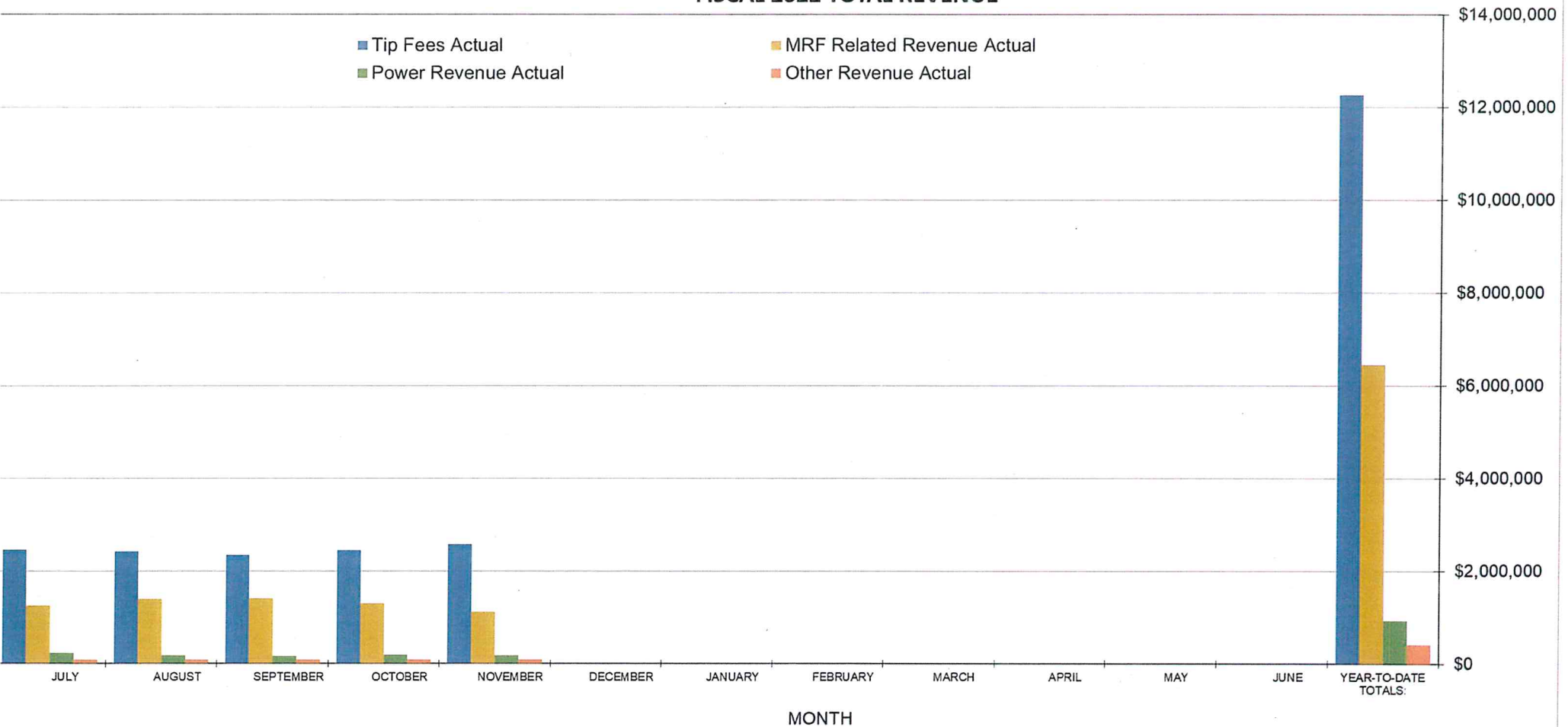
	November	Budget	B/(W) Mon	YTD F'22	Budget	B/(W) YTD	F'21 YTD	B/(W) LY YTD
Tip Fees	\$2,585	\$2,204	\$381	\$12,268	\$11,242	\$1,026	\$12,817	(\$549)
Other Revenue	1,373	973	400	7,792	4,961	2,831	5,407	2,385
* Total Revenues *	\$3,958	\$3,177	\$781	\$20,060	\$16,203	\$3,857	\$18,224	\$1,836

- November tip fee revenue is \$2.6 million and is 17.3% over budget and is \$202K or 8.5% higher than November of 2020.
- Permit tonnage received in November is 54.7K tons which is 5.2% higher than the prior month.
- Other revenue in November is \$1.4 million and is \$401K over budget. MRF product revenue is \$562K and CRV rebates are \$333K.
- November total revenue; \$4.0 million; \$781K or 24.6% over budget and \$392K or 11.0% higher than November 2020.
- YTD tip fee revenue is \$12.3 million and is \$1.0 million or 9.1% over budget and \$549K or 4.3% lower than the same period in the prior year.
- Permit tonnage received YTD is 269,045 tons and is 16% lower than the prior year
- YTD other revenue is \$7.8 million and is \$2.8 million over budget. MRF and CRV YTD revenue is \$5.3 million and is \$2.5 million over budget and \$2.3 million higher than YTD last year.
- Total YTD revenue is \$20.0 million which is \$3.9 million or 23.8% over budget and \$1.8 million or 10.1% higher than the same period in fiscal 2021.

Financial Review – November 2021

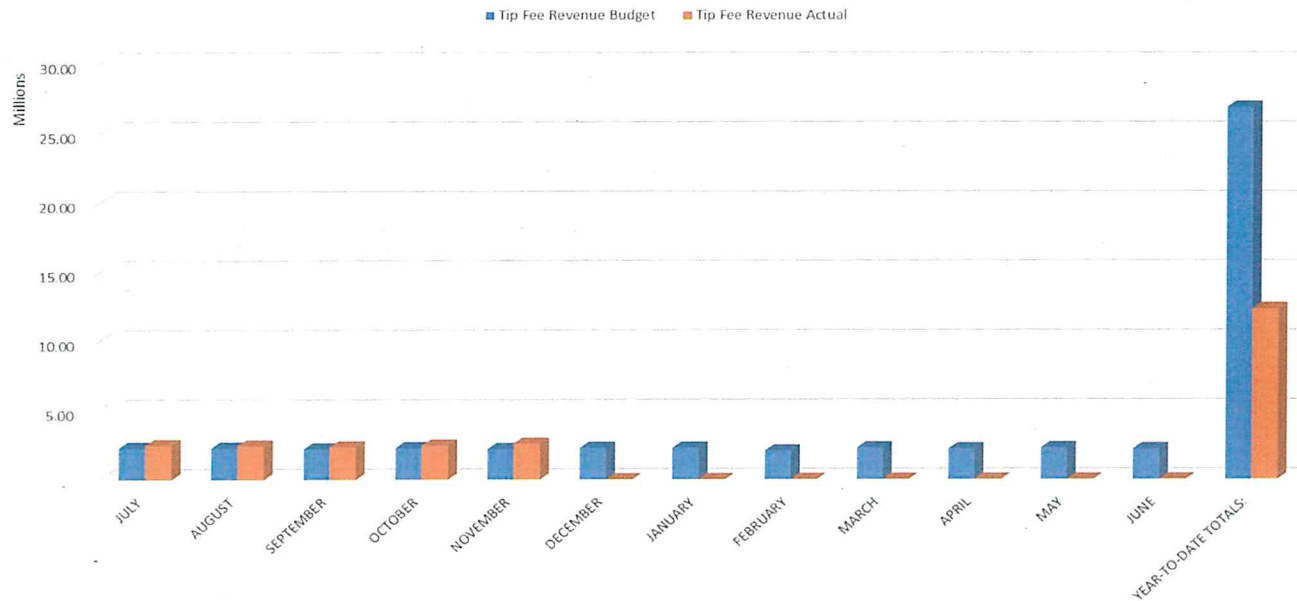
FISCAL 2022 TOTAL REVENUE

■ Tip Fees Actual ■ MRF Related Revenue Actual
■ Power Revenue Actual ■ Other Revenue Actual

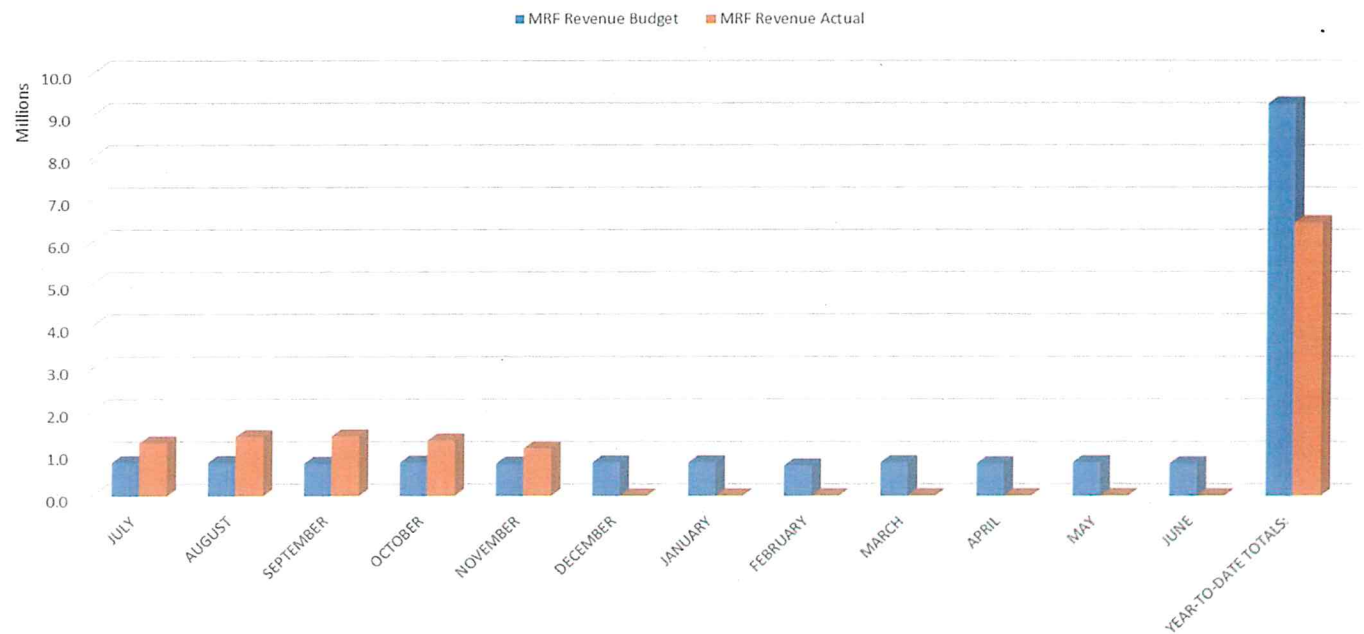


Financial Review – November 2021

Fiscal 2022 Tip Fee Revenue



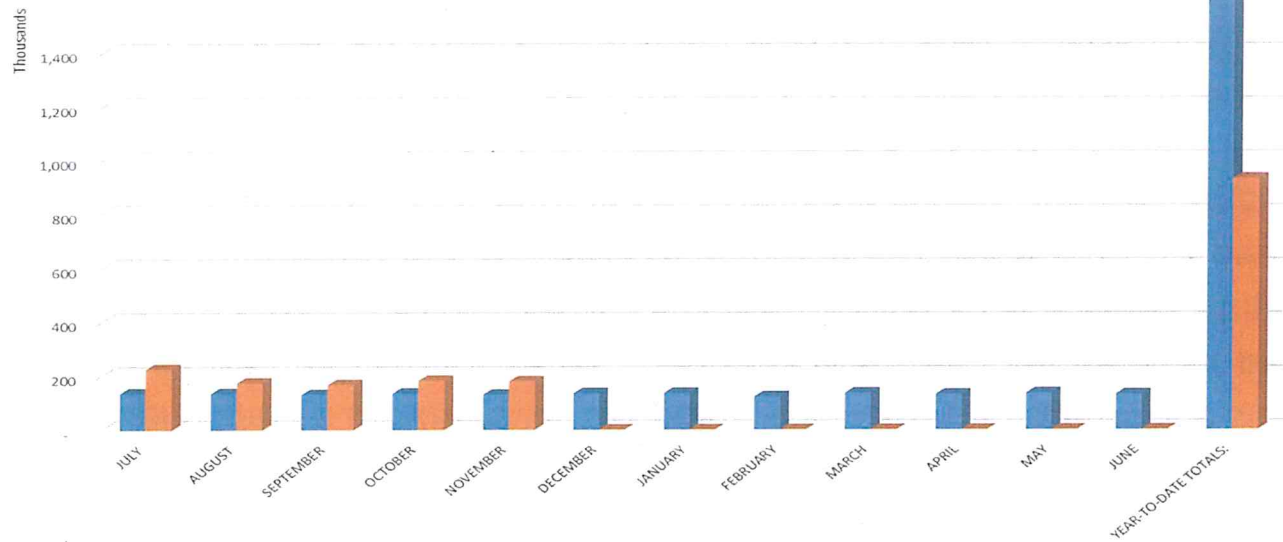
Fiscal 2022 MRF Revenue



Financial Review – November 2021

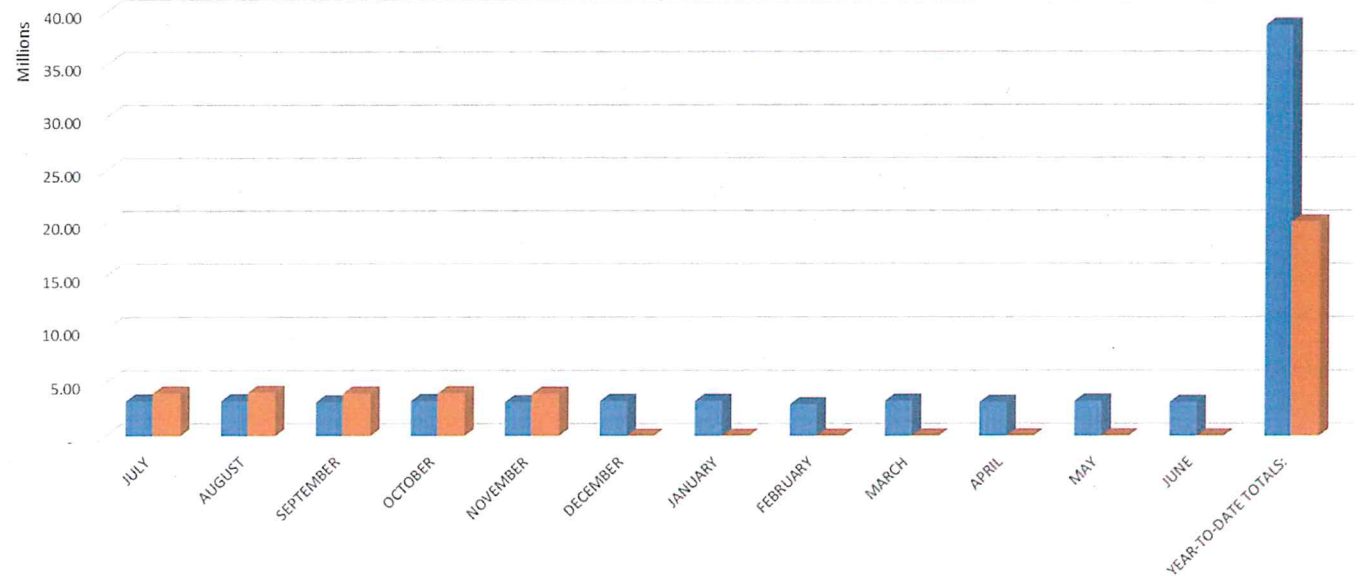
Fiscal 2022 Power Revenue

■ Power Revenue Budget ■ Power Revenue Actual



Fiscal 2022 Total Revenue

■ Total Revenue Budget ■ Total Revenue Actual



Financial Review – November 2021

Operating Expense & Net Income ('000)

	November	Budget	B/(W) Mon	YTD F'22	Budget	B/(W) YTD	F'21 YTD	B/(W) LY YTD
Employment Exp	\$1,240	\$1,243	\$3	\$6,282	\$6,342	\$60	\$5,774	(\$508)
Other Operating Exp	1,681	1,560	(121)	7,384	7,802	418	6,911	(473)
Non-op Rev (Exp)	(122)	(127)	5	(627)	(634)	7	(397)	(230)
Net Income	\$915	\$247	\$668	\$5,767	\$1,425	\$4,342	\$5,142	\$625

November

- Employment expense is \$1.2 million and is 1.0% below budget for the month.
- Fuel expense is \$26K over budget due to higher usage on the site and the landfill.
- Environmental service costs are \$526K over budget due to air permit renewal costs.
- Repair and maintenance costs are \$101K over budget due to higher shop costs, building washing.
- Total operating costs are \$2.9 million and are \$118K or 4.2% over budget for the month.
- Net income for the month is \$915K million versus budgeted income of \$246K.

YTD

- Employment expense is \$6.3 million and is \$60K or 0.9% under budget for the YTD.
- Fuel expense is \$126K over budget YTD due to usage in the site and landfill.
- Recycling services; \$148K or 23.3% over budget due to higher wood waste processing costs.
- Utility costs are \$22K over budget.
- Total operating expenses are \$13.7 million and are \$477K or 3.4% below budget.
- Net income for the year to date is \$5.8 million and is \$4.3 million over budget and \$625K higher than the same period in fiscal 2021.

Financial Review – November 2021

Cash Position

<u>Change in Cash Position</u>	<u>Jul 1, 2021</u>	<u>Nov 30, 2021</u>	<u>Change</u>
Cash in Bank	\$ 9,819,311	\$ 14,132,418	\$4,313,107
Investments	<u>22,081,485</u>	<u>22,112,977</u>	<u>31,492</u>
Total	<u>\$31,900,796</u>	<u>\$36,245,395</u>	<u>\$4,344,599</u>

Fiscal 2022 Capital Spending Summary

Facilities	\$1,027,420
Equipment	117,909
Module Development	<u>1,517,139</u>
Total	<u>\$2,662,468</u>

Financial Review – November 2021

Summary of Landfill Tonnage Activity

SITE Tonnage	Nov 2021	November		B/W Than Prior Year
		FY22 YTD	FY21 YTD	
Site Accepted Materials				
Refuse - Landfill	10,891.01	56,602.18	56,172.42	429.76
Refuse - Landfill - Regional Waste	27,554.57	135,544.58	184,407.76	(48,863.18)
All Other Site Accepted Material	32,006.02	158,803.72	158,556.34	247.38
Total Site Accepted Material	70,451.60	350,950.48	399,136.52	(48,186.04)
Site Diverted Material	22,283.86	119,489.61	118,942.99	546.61
Landfilled	48,167.74	231,460.88	280,193.53	(48,732.66)
% Diverted = All Tonnage less Reg Waste	51.9%	55.5%	55.4%	
 C&D Percent Diversion	 53.9%	 61.2%	 73.4%	
Single Stream Recycling Percent	61.3%	65.3%	61.8%	
Percent Diversion - Entire MRF	58.6%	63.6%	66.2%	
 <u>12 Month Average</u>				
C&D Percent Diversion	67.1%	70.9%	68.6%	
Single Stream Recycling Percent	65.3%	65.4%	64.1%	
Percent Diversion - Entire MRF	65.9%	67.5%	66.0%	

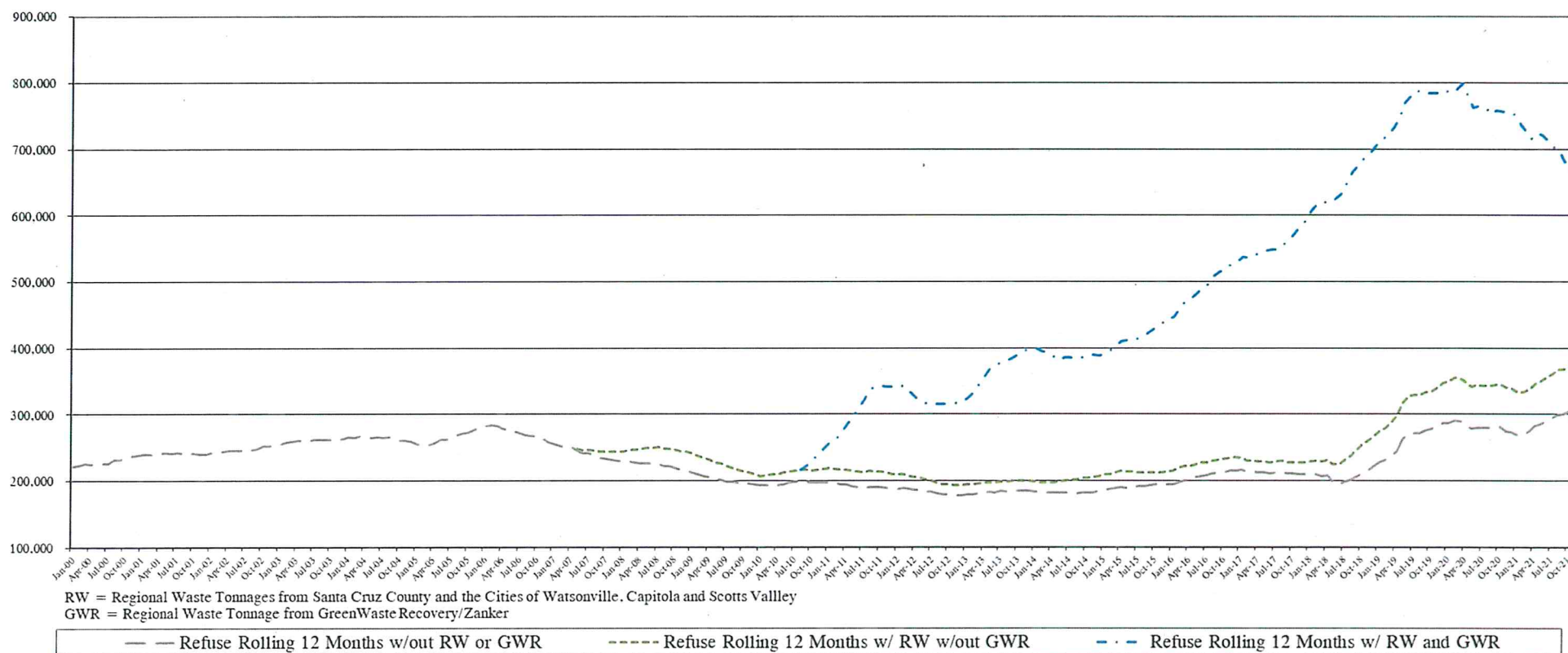
Financial Review – November 2021

Summary of MRF Tonnage Activity

MRF Tonnage	November			B/W Than Prior Year	
	Nov 2021	FY22 YTD	FY21 YTD		
MRF C&D Accepted	3,246.84	18,229.13	17,215.17	1,013.96	
MRF SSR Accepted	5,656.47	27,616.30	28,221.08	(604.78)	
Total MRF Accepted Materials	8,903.31	45,845.43	45,436.25	409.18	0.9%
C&D - Diverted Materials					
Metal	440.80	2,469.47	2,280.41	189.06	
Mattresses	30.97	152.90	195.31	(42.41)	
Asphalt/Concrete	184.38	695.07	798.00	(102.93)	
Unders from Sort Line	753.60	5,027.30	5,329.07	(301.77)	
Roofing Materials	0.00	0.00	913.83	(913.83)	
Tires Hauled	11.52	78.87	72.18	6.69	
Sheetrock	94.58	488.85	958.35	(469.50)	
Wood Out	234.94	2,245.01	2,097.04	147.97	
Total C&D Diverted	1,750.79	11,157.47	12,644.19	(1,486.73)	-11.8%
SSR - Diverted Materials					
Mixed Plastic	57.83	188.96	235.69	(46.73)	
OCC/Cardboard	1,528.29	8,514.54	8,134.57	379.97	
Mixed Glass	790.49	3,879.84	3,843.73	36.11	
PET	87.85	495.72	459.52	36.20	
Aluminum UBC	19.43	121.24	108.40	12.84	
Poly Prop #5	0.00	167.42	134.10	33.32	
HDPE - Color	41.77	231.00	299.68	(68.68)	
HDPE - Natural	20.35	181.00	182.31	(1.31)	
Mixed Paper	672.91	3,303.79	3,622.90	(319.11)	
Aluminum scrap	0.00	20.48	21.16	(0.68)	
Tin Lined Steel Cans	61.67	207.40	249.85	(42.45)	
Shredded Paper	21.88	63.57	21.49	42.08	
Thermoform	103.65	190.09	124.00	66.09	
Clear Film/Hoop House Plastics	62.01	456.74	0.00	456.74	
Total Single Stream Recycling Diverted	3,468.13	18,021.79	17,437.40	584.39	3.4%
Total MRF Diverted Materials	5,218.92	29,179.26	30,081.59	(902.34)	-3.0%

Financial Review – November 2021

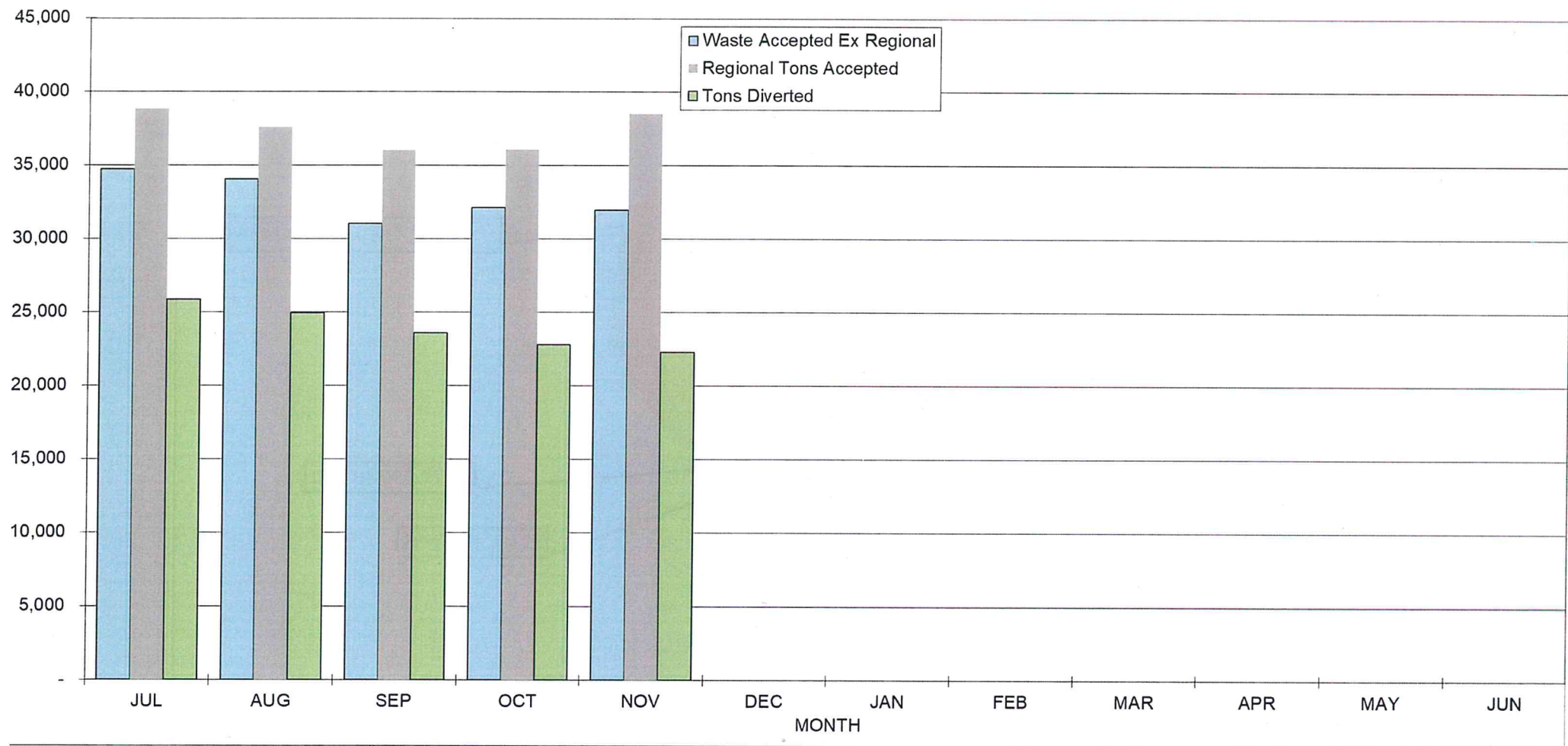
MRWMD Landfill Rolling 12 Month Refuse



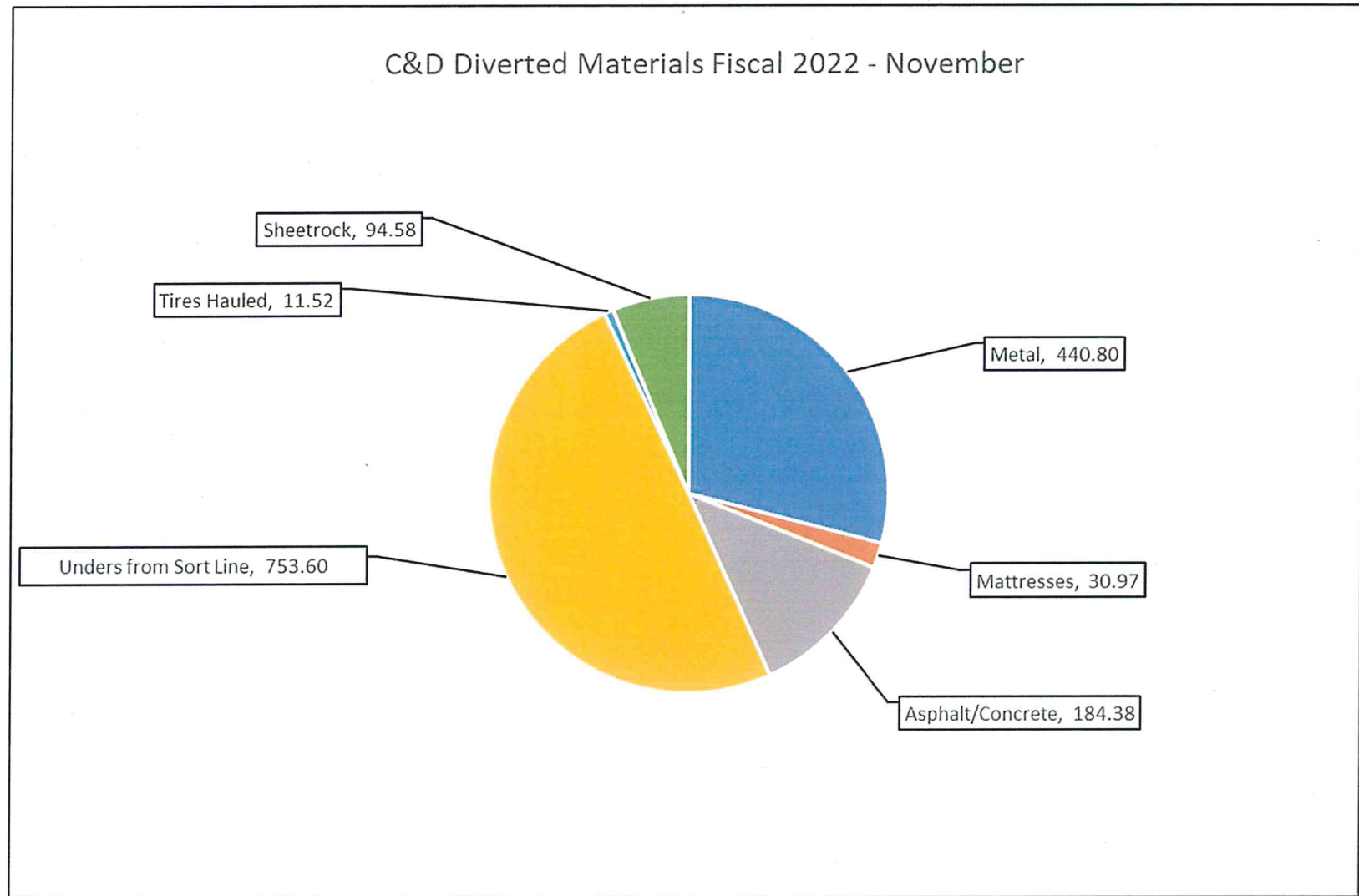
Financial Review – November 2021

TONS

TOTAL SOLID WASTE ACCEPTED AND TOTAL SOLID WASTE DIVERTED



Financial Review – November 2021



Financial Review – November 2021

