



Monterey Regional Waste Management District

Turning Waste Into Resources

Since 1951

Financial & Operations Review

September 2021

Board of Directors

October 22, 2021

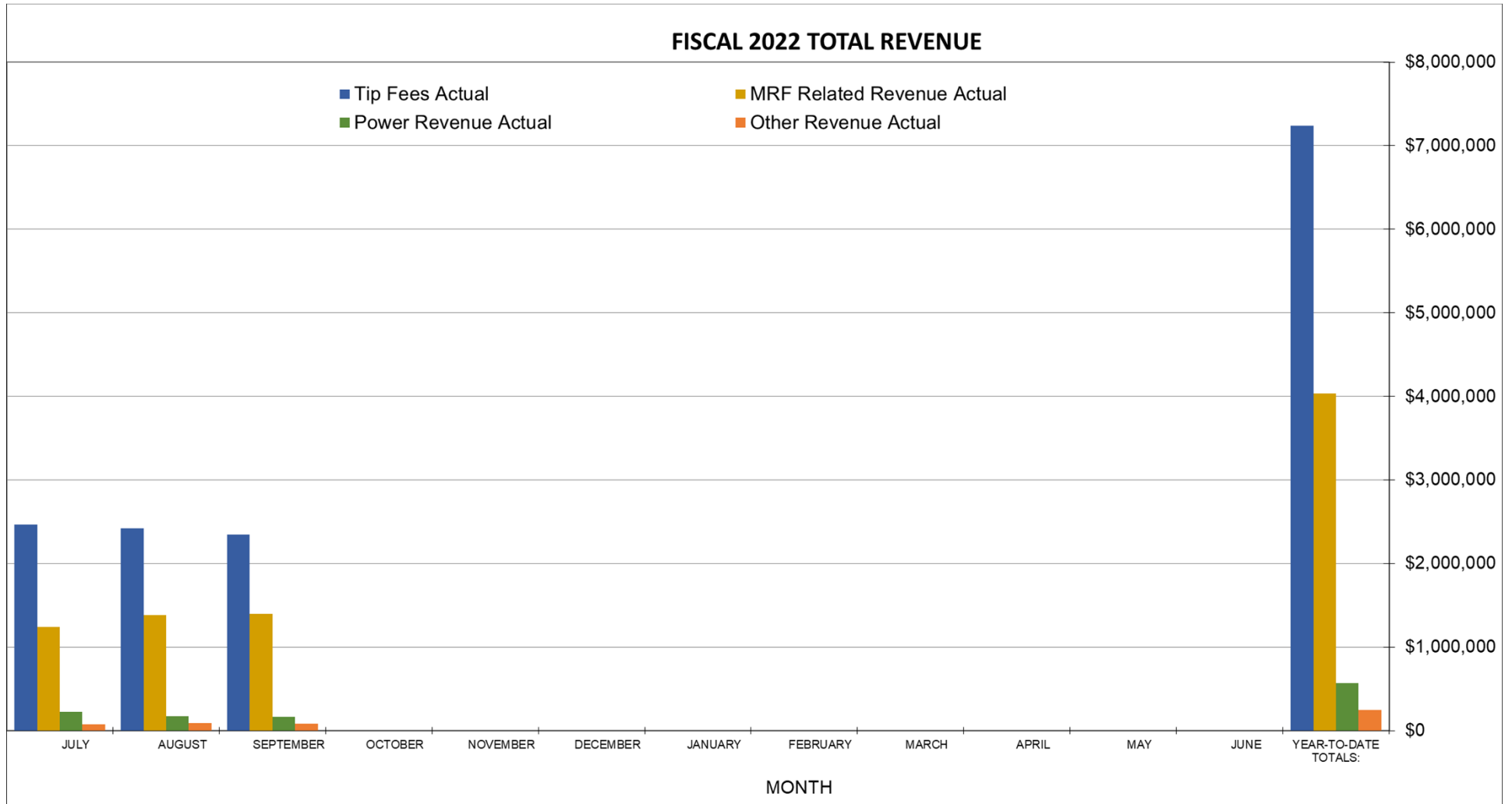
Financial Review – September 2021

September 2021 Revenue ('000)

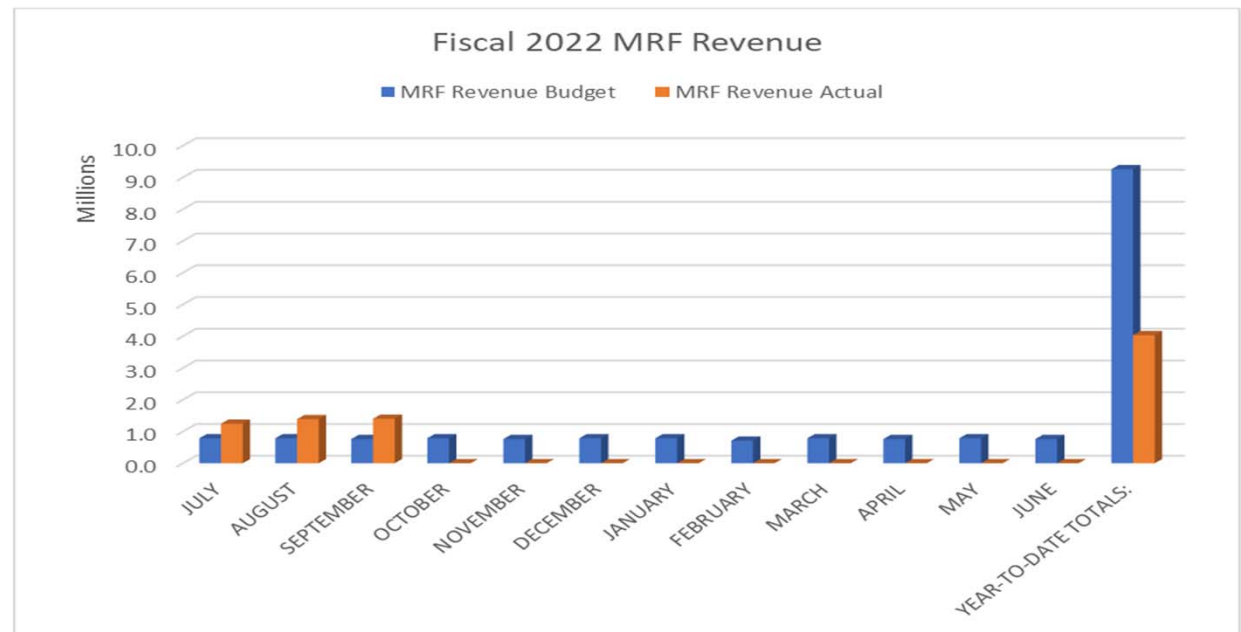
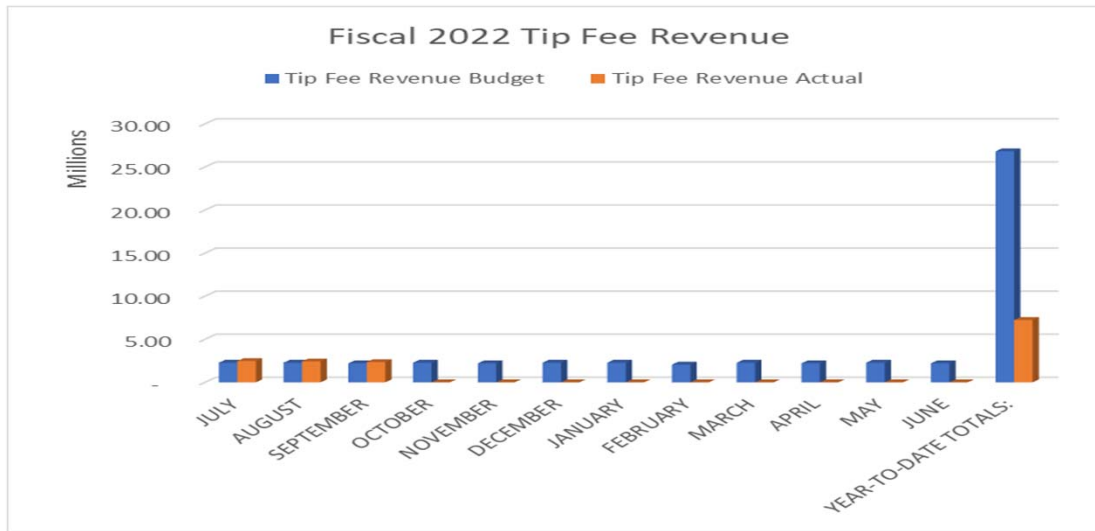
	September	Budget	B/(W) Mon	YTD F22	Budget	B/(W) YTD	F'21 YTD	B/(W) LY YTD
Tip Fees	\$2,345	\$2,204	\$141	\$7,237	\$6,760	\$477	\$7,603	(\$366)
Other Revenue	1,651	973	678	4,851	2,983	1,868	3,177	1,674
* Total Revenues *	\$3,996	\$3,177	\$819	\$12,088	\$9,743	\$2,345	\$10,780	\$1,308

- September tip fee revenue is \$2.3 million and is 6.4% over budget and is \$307K or 11.6% lower than September of 2020. The decrease from September 2020 is due to lower contract tip fee revenue.
- Permit tonnage received in September is 51.6K tons which is 6% lower than the prior month.
- Other revenue in September is \$1.7 million and is \$678K over budget. MRF product revenue is \$722K and CRV rebates are \$369K.
- September total revenue; \$4.0 million; \$819K or 25.8% over budget and \$95K or 2.4% higher than September 2020.
- YTD tip fee revenue is \$7.2 million and is \$477K or 7.1% over budget and \$366K or 4.8% lower than the prior year.
- Permit tonnage received YTD is 162,274 tons and is 17% lower than the prior year
- YTD other revenue is \$4.9 million and is \$1.9 million over budget. MRF and CRV YTD revenue is \$4.9 million and is \$1.9 million over budget and \$1.7 million higher than YTD last year.
- Total YTD revenue is \$12.1 million; \$2.3 million or 24.1% over budget and \$1.3 million or 12.1% higher than the same period in fiscal 2021.

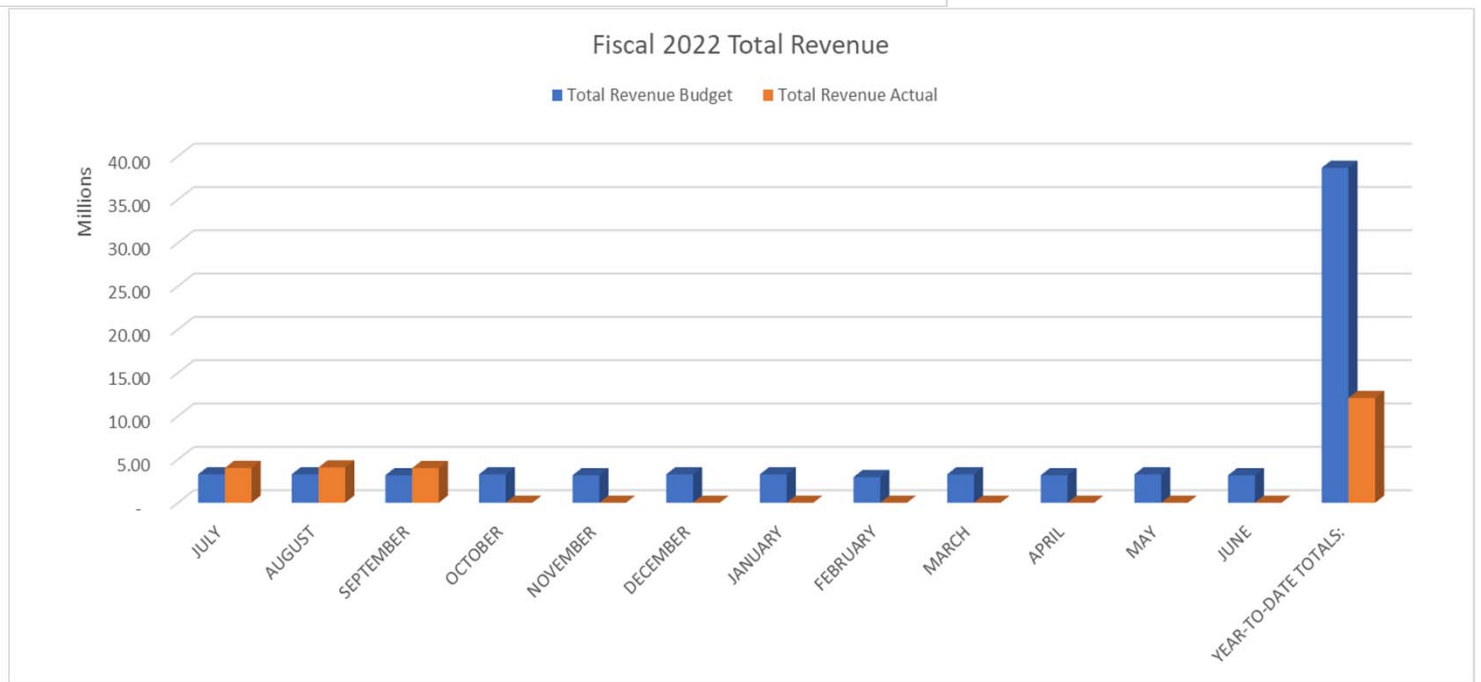
Financial Review – September 2021



Financial Review – September 2021



Financial Review – September 2021



Financial Review – September 2021

Operating Expense & Net Income ('000)

	September	Budget	B/(W) Mon	YTD F22	Budget	B/(W) YTD	F'21 YTD	B/(W) LY YTD
Employment Exp	\$1,303	\$1,243	(\$60)	\$3,847	\$3,813	(\$34)	\$3,875	\$28
Other Operating Exp	1,425	1,560	135	4,236	4,681	445	3,691	(545)
Non-op Rev (Exp)	(296)	(127)	(169)	(375)	(380)	5	(294)	(81)
Net Income	\$972	\$247	\$725	\$3,630	\$869	\$2,761	\$2,920	\$710

September Expense

- Employment expense is \$1.3 million and is \$59K or 4.8% over budget for the month.
- Fuel expense is \$23K over budget due to higher CNG purchases.
- Operating supplies are \$10K over budget due to higher rental costs and MRF supplies costs.
- Utility costs are \$14K due to higher PG&E charges for the month.
- Total operating costs are \$2.7 million and are \$76K or 2.7% below budget for the month.
- Net income for the month is \$973K versus budgeted income of \$246K.

YTD Expense

- Employment expense is \$3.8 million and is \$34K or 0.9% over budget for the YTD.
- Fuel expense is \$57K over budget YTD due to higher CNG purchases and usage in the Site and Landfill.
- Recycling services; \$56K or 14.8% over budget partially due to higher transport costs of MRF products.
- Utility costs are \$19K over budget due to higher charges for the month of September.
- Total operating expenses are \$8.1 million and are \$412K or 4.8% below budget.
- Net income for the year to date is \$3.6 million and is \$2.8 million over budget and \$1.7 million higher than the same period in fiscal 2021.

Financial Review – September 2021

Cash Position

<u>Change in Cash Position</u>	<u>Jul 1, 2021</u>	<u>Sept 30, 2021</u>	<u>Change</u>
Cash in Bank	\$ 9,819,309	\$ 11,733,810	\$1,914,502
Investments	<u>22,081,486</u>	<u>22,099,519</u>	<u>18,033</u>
Total	<u>\$31,900,795</u>	<u>\$33,833,329</u>	<u>\$1,932,534</u>

Fiscal 2022 Capital Spending Summary

Facilities	\$ 229,730
Equipment	158,164
Module Development	<u>630,630</u>
Total	<u>\$1,018,524</u>

Financial Review – September 2021

Summary of Landfill Tonnage Activity

SITE Tonnage	Sep 2021	September		B/W Than Prior Year
		FY22 YTD	FY21 YTD	
Site Accepted Materials				
Refuse - Landfill	11,384	34,698	33,849	849
Refuse - Landfill - Regional Waste	25,241	83,325	114,007	(30,683)
All Other Site Accepted Material	30,436	94,272	99,365	(5,094)
Total Site Accepted Material	67,060	212,295	247,221	(34,927)
Site Diverted Material	23,575	74,396	76,282	(1,886)
Landfilled	43,485	137,899	170,939	(33,041)
% Diverted = All Tonnage less Reg Waste	56.4%	57.7%	57.3%	

Diversion Percentages

C&D Percent Diversion	53.7%	66.2%	71.5%
Single Stream Recycling Percent	71.4%	68.7%	62.4%
Percent Diversion - Entire MRF	64.0%	67.7%	66.1%

12 Month Average

C&D Percent Diversion	71.1%	68.6%
Single Stream Recycling Percent	64.7%	64.1%
Percent Diversion - Entire MRF	67.1%	66.0%

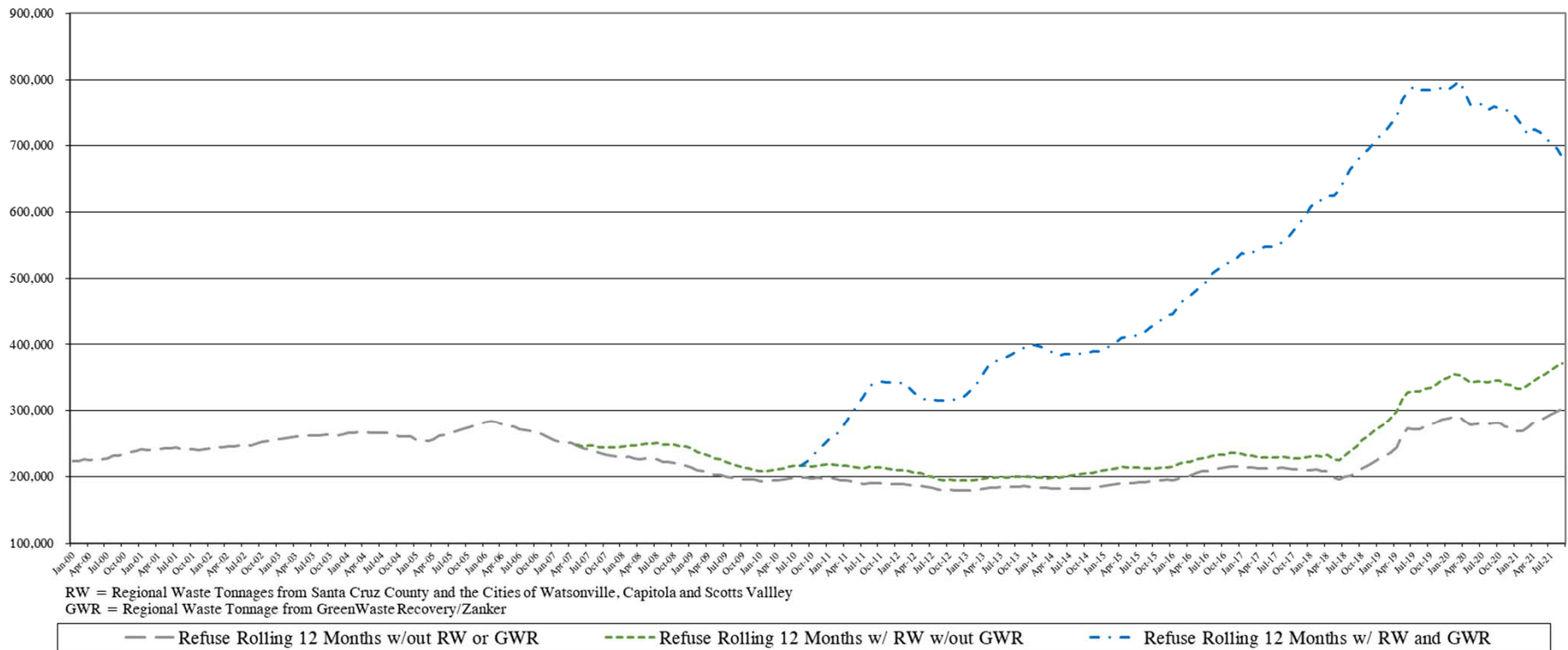
Financial Review – September 2021

Summary of MRF Tonnage Activity

MRF Tonnage	September			B/W Than Prior Year
	Sep 2021	FY22 YTD	FY21 YTD	
MRF C&D Accepted	3,892.34	11,526.81	11,533.35	(7)
MRF SSR Accepted	5,361.95	16,343.02	17,028.35	(685)
Total MRF Accepted Materials	9,254.29	27,869.83	28,561.70	(691.87)
<u>C&D Diverted Material</u>				
Metal	511.26	1,549.84	1,387.03	162.81
Mattresses	27.42	90.01	119.71	(29.70)
Asphalt/Concrete	131.37	334.28	525.98	(191.70)
Unders from Sort Line	1,057.90	3,552.20	3,466.30	85.90
Roofing Materials	-	-	913.83	(913.83)
Tires Hauled	13.69	44.66	48.74	(4.08)
Sheetrock	69.50	311.81	674.19	(362.38)
Wood Out	277.98	1,744.50	1,111.31	633.19
Total C&D Diverted	2,089.12	7,627.30	8,247.09	(619.80)
<u>SSR Diverted Material</u>				
Plastic	248.98	746.86	675.56	71.30
OCC/Cardboard	1,851.92	5,410.07	5,006.22	403.85
Mixed Glass	765.62	2,356.37	2,396.16	(39.79)
Aluminum	40.46	82.29	96.34	(14.05)
Mixed Paper	753.78	2,157.33	2,235.13	(77.80)
Tin Lined Steel Cans	42.45	125.53	157.52	(31.99)
Shredded Paper	-	41.69	-	41.69
Themoform	44.40	86.44	60.06	26.38
Clear Film/Hoop House Plastics	81.79	228.44	-	228.44
Total Single Stream Recycling Diverted	3,829.40	11,235.02	10,626.99	608.03
Total MRF Diverted Materials	5,918.52	18,862.32	18,874.08	(11.76)

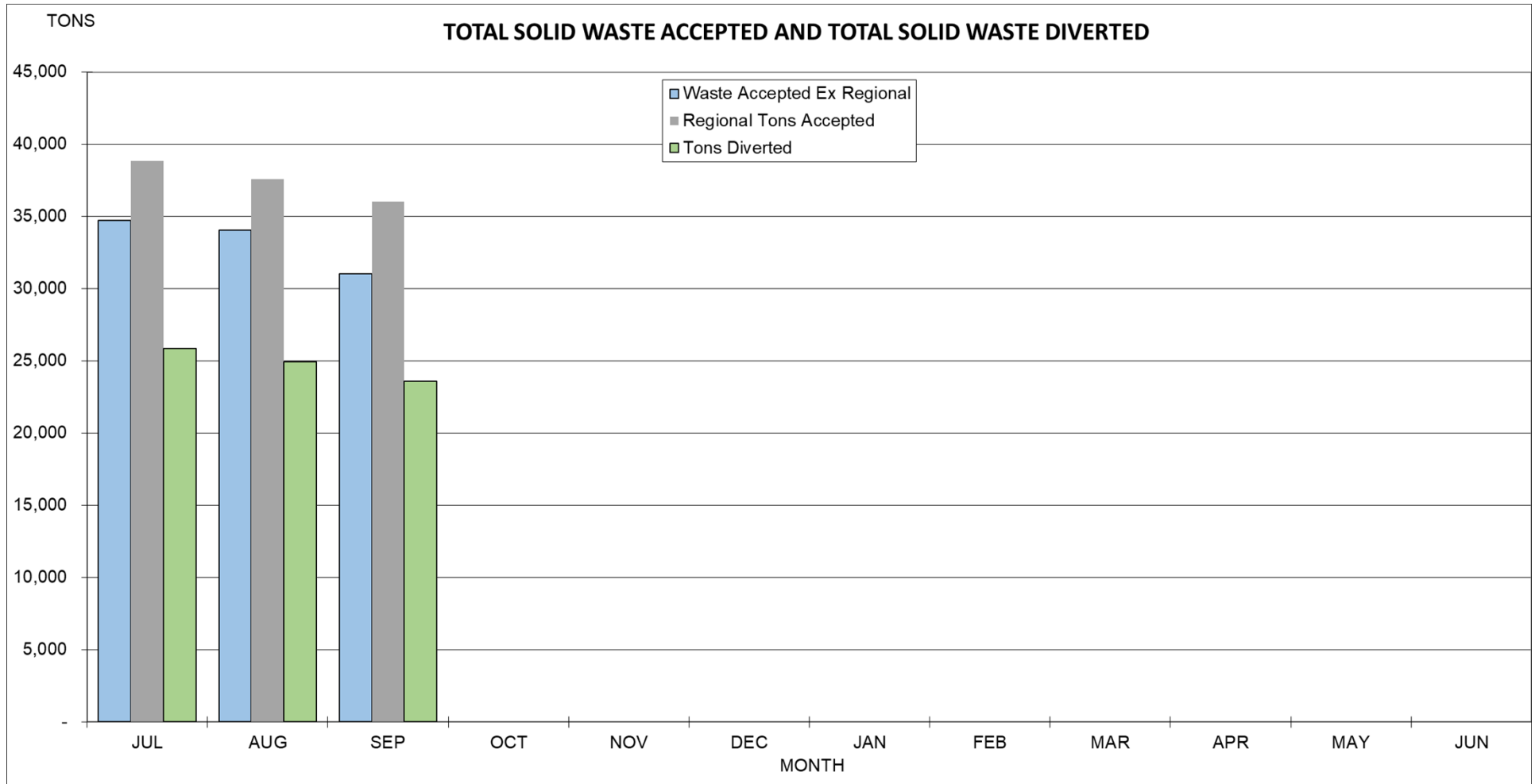
Financial Review – September 2021

MRWMD Landfill Rolling 12 Month Refuse

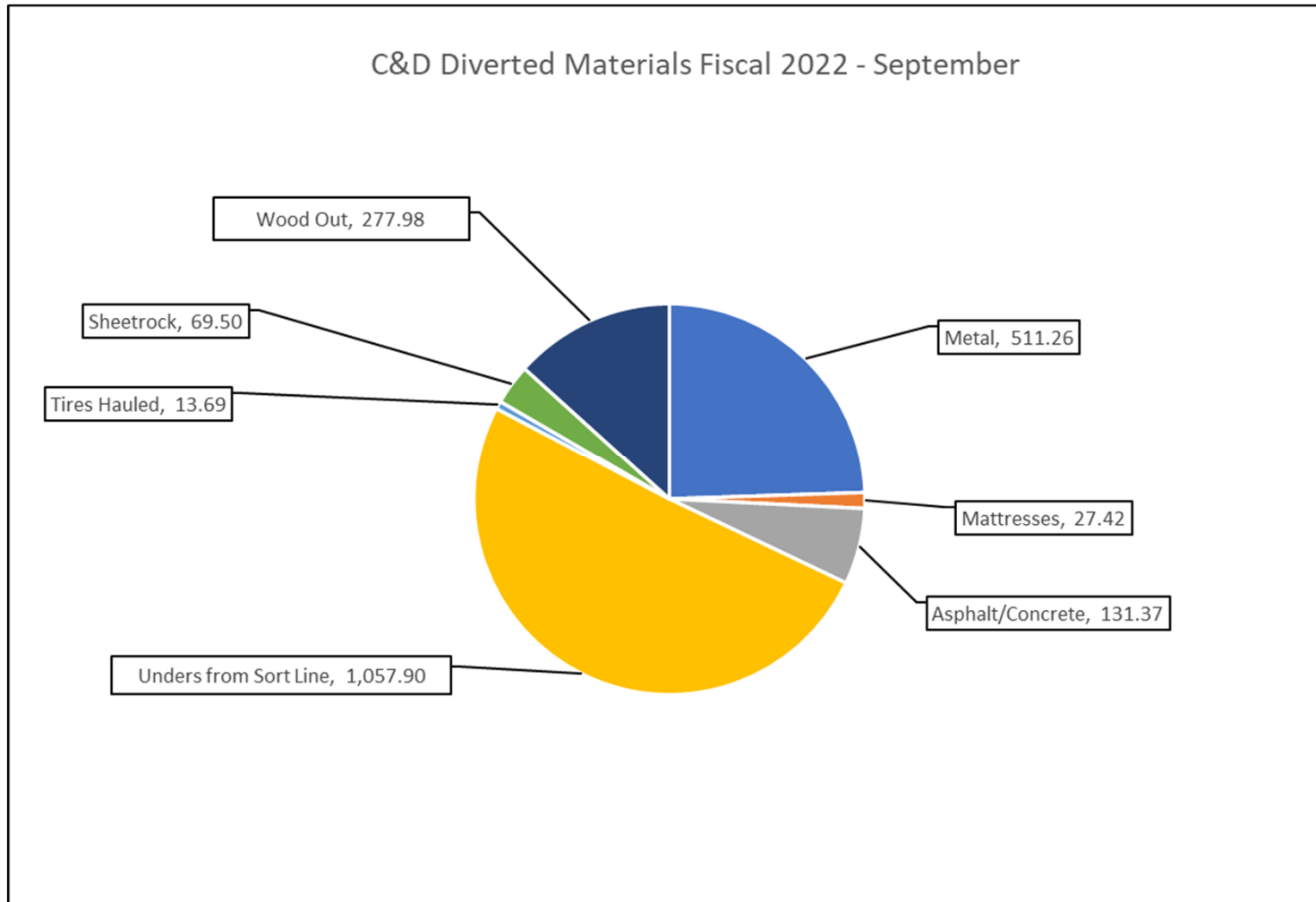


RW = Regional Waste Tonnes from Santa Cruz County and the Cities of Watsonville, Capitola and Scotts Valley
 GWR = Regional Waste Tonnage from GreenWaste Recovery/Zanker

Financial Review – September 2021



Financial Review – September 2021



Financial Review – September 2021

