



Monterey Regional Waste Management District

Turning Waste Into Resources

Since 1951

Financial & Operations Review

August 2021

Board of Directors

August 20, 2021

Financial Review – August 2021

August 2021 Revenue ('000)

	August	Budget	B/(W) Mon	YTD F22	Budget	B/(W) YTD	F'21 YTD	B/(W) LY YTD
Tip Fees	\$2,425	\$2,278	\$147	\$4,892	\$4,556	\$336	\$4,951	(\$59)
Other Revenue	1,651	1,005	646	3,200	2,010	1,190	1,928	1,272
* Total Revenues *	\$4,076	\$3,283	\$793	\$8,092	\$6,566	\$1,526	\$6,879	\$1,213

- August tip fee revenue is \$2.4 million and is 6.4% over budget and is \$69K or 2.9% higher than August of 2020. The increase over August 2020 is due to higher district and regional tip fee revenue partially offset by lower contract waste tip fee revenue.
- Permit tonnage received in August is 54.9K tons which is 2% lower than the prior month.
- Other revenue in August is \$1.7 million and is \$544K over budget. MRF product revenue is \$688K and CRV rebates are \$306K.
- August total revenue; \$4.1 million; \$792K or 24.1% over budget and 17.8% higher than August 2020.
- YTD tip fee revenue is \$4.9 million; \$336K or 7.4% over budget and 1.2% lower than the prior year
- Permit tonnage received YTD is 110,705 tons and is 14% lower than the prior year
- YTD other revenue in August is \$3.2 million and is \$1.2 million over budget. MRF YTD revenue is \$1.1 million; \$558K over budget and \$1.2 million higher than YTD last year.
- Total YTD revenue is \$8.1 million; \$1.5 million or 23.2% over budget and \$1.2 million or 17.6% higher than the same period in fiscal 2021.

Financial Review – August 2021

Operating Expense & Net Income ('000)

	August	Budget	B/(W) Mon	YTD F22	Budget	B/(W) YTD	F'21 YTD	B/(W) LY YTD
Employment Exp	\$1,205	\$1,285	\$80	\$2,544	\$2,570	\$26	\$2,575	\$31
Other Operating Exp	1,449	1,560	111	2,812	3,121	309	2,338	(474)
Non-op Rev (Exp)	(36)	(127)	91	(79)	(253)	174	(74)	(5)
Net Income	\$1,386	\$311	\$1,075	\$2,657	\$622	\$2,035	\$1,892	\$765

August Expense

- Employment expense is \$1.2 million and is \$80K or 6.2% under budget for the month.
- Fuel expense is \$34K over budget due to higher usage in the Site and Landfill departments.
- Environmental services are \$51K under budget for August
- Recycling services are \$21K or 16.6% over budget.
- Total operating costs are \$2.7 million and are \$192K or 6.8% below budget for the month.
- Net income for the month is \$1.4 million versus budgeted income of \$311K.

YTD Expense

- Employment expense is \$2.5 million and is \$26K or 1.0% under budget for the YTD.
- Environmental services are \$52K or 42.6% under budget due to timing of expenditures.
- Fuel expense is \$34K over budget YTD due to higher usage in the Site and Landfill departments.
- Recycling services; \$45K or 17.8% over budget partially due to higher transport costs of MRF products.
- Total operating expenses are \$5.4 million and are \$335K or 5.9% below budget.
- Net income for the year to date is \$2.7 million and is \$2.0 million over budget and \$766K higher than fiscal 2021

Financial Review – August 2021

Cash Position

<u>Change in Cash Position</u>	<u>Jul 1, 2021</u>	<u>August 31, 2021</u>	<u>Change</u>
Cash in Bank	\$ 9,819,308	\$ 11,447,204	\$1,627,896
Investments	<u>22,081,488</u>	<u>22,099,517</u>	<u>18,030</u>
Total	<u>\$31,900,796</u>	<u>\$33,546,722</u>	<u>\$1,645,926</u>

Fiscal 2022 Capital Spending Summary

Facilities	\$ 181,266
Equipment	310,408
Module Development	<u>6,971</u>
Total	<u>\$ 498,645</u>

Financial Review – August 2021

Summary of Landfill Tonnage Activity

SITE Tonnage	Aug 2021	FY22 YTD Aug/21	FY21 YTD Aug/20	B/(W) Than YTD FY21
Site Accepted Materials				
Refuse - Landfill	11,579.00	23,314.85	22,827.18	487.67
Refuse - Landfill - Regional Waste	28,264.16	58,083.84	75,541.76	(17,457.92)
All Other Site Accepted Material	31,807.23	63,835.47	65,089.36	(1,253.89)
Total Site Accepted Material	71,650.39	145,234.16	163,458.30	(18,224.14)
Site Diverted Materials	24,944.50	50,820.83	52,152.35	(1,331.52)
Landfilled	46,705.89	94,413.34	111,305.95	(16,892.62)
% Diverted = All Tonnage less Reg Waste	57.5%	58.3%	59.3%	

Diversification Percentages

C&D % Diversion	76.8%	72.5%	79.9%
Single Stream Recycling % Diversion	65.4%	67.4%	62.2%
% Diversion - Entire MRF	69.8%	69.5%	69.3%

12 Month Average

C&D Percent Diversion	71.1%	71.1%	68.6%
Single Stream Recycling Percent Diversion	64.7%	64.7%	64.1%
Percent Diversion - Entire MRF	67.1%	67.1%	66.0%

Financial Review – August 2021

Summary of MRF Tonnage Activity

MRF Tonnage	Aug 2021	FY22 YTD	FY21 YTD	B/(W) Than YTD FY21
MRF C&D Accepted	3,513	7,634	7,466	168
MRF SSR Accepted	5,538	10,981	11,147	(166)
Total MRF Accepted Materials	9,051	18,616	18,613	2

C&D Diverted Materials

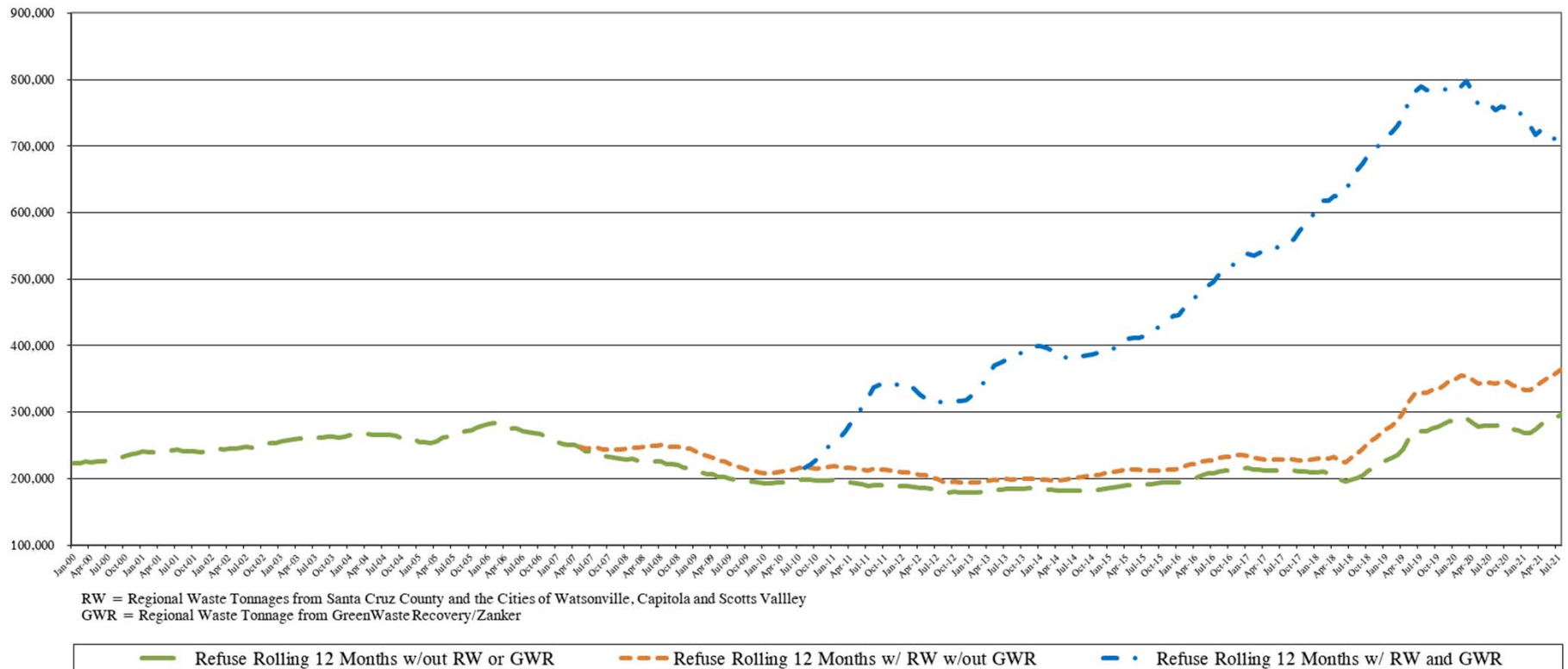
Metal	515	1,039	907	132
Mattresses	37	63	79	(16)
Asphalt/Concrete	90	203	369	(166)
Unders from Sort Line	1,207	2,494	2,664	(169)
Roofing Materials	-	-	617	(617)
Tires Hauled	18	31	35	(4)
Sheetrock	93	242	466	(223)
Wood Out	740	1,467	826	640
Total C&D Diverted	2,700	5,538	5,962	(424)

SSR Diverted Materials

Plastics	310	498	380	118
OCC/Cardboard	1,817	3,558	3,317	241
Mixed Glass	808	1,591	1,527	64
Aluminum UBC	20	42	20	22
Mixed Paper	583	1,404	1,538	(134)
Tin Lined Steel Cans	41	83	112	(29)
Shredded Paper	21	42	-	42
Thermoform	21	42	40	2
Clear Film/Hoop House Plastics	-	147	-	147
Total Single Stream Recycling Diverted	3,621	7,406	6,934	472
Total MRF Diverted Materials	6,321	12,944	12,896	48

Financial Review – August 2021

MRWMD Landfill Rolling 12 Month Refuse



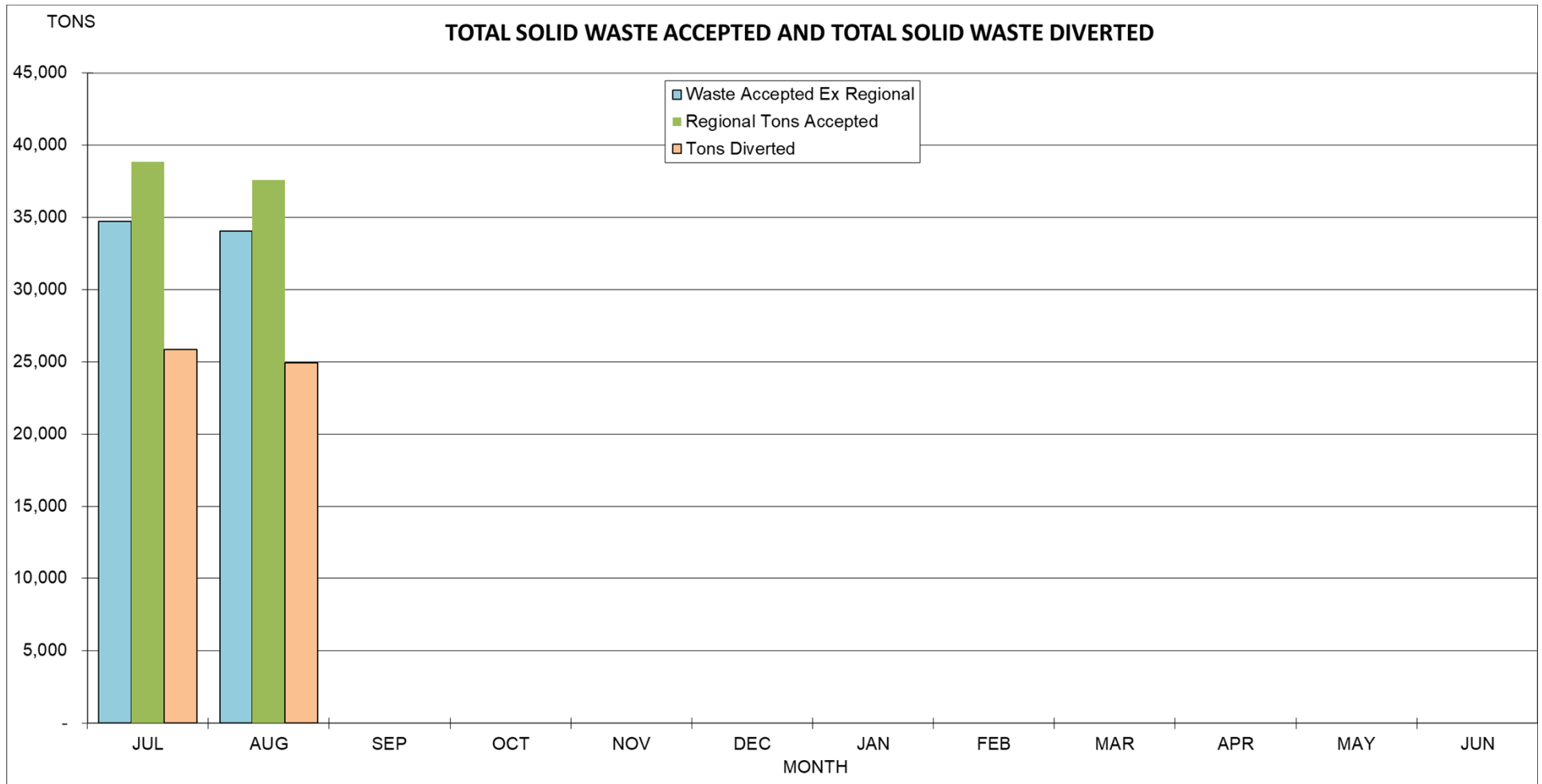
Financial Review – August 2021

SITE OPERATING REPORT (IN TONS) FOR FISCAL YEAR 2021-2022

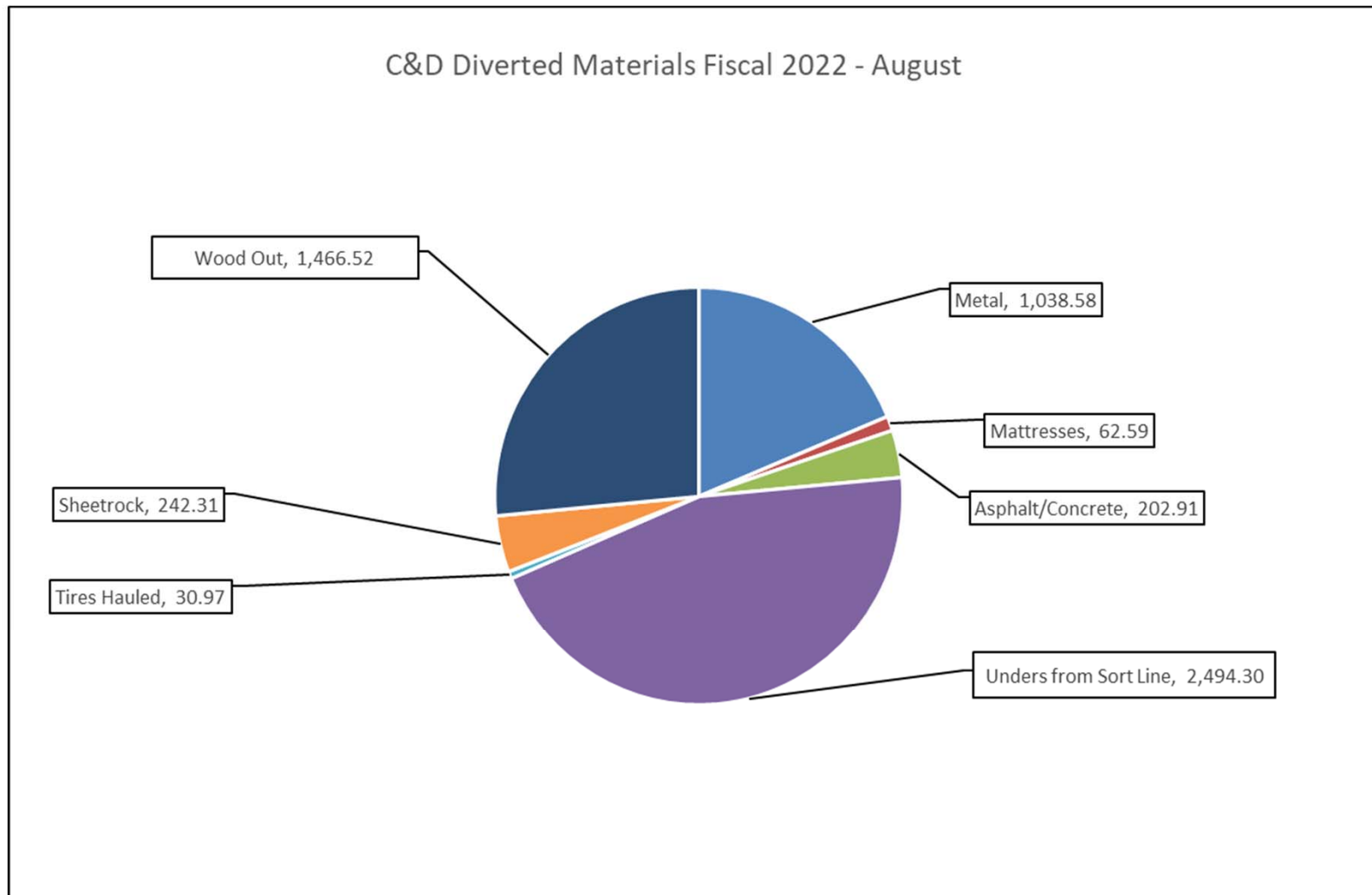
Through the Month Ended August 31, 2021

PERIOD	Franchise Haulers		Commercial and Industrial Chgs		Cash Customers		Waste Accepted Ex Regional		Regional Waste		Diverted Materials		Total Landfilled	
	20-21	21-22	20-21	21-22	20-21	21-22	20-21	21-22	20-21	21-22	20-21	21-22	20-21	21-22
<i>FOR THE MONTH OF:</i>														
JULY	17,059	16,239	10,677	8,285	10,714	10,225	38,451	34,748	46,453	38,835	(25,665)	(25,876)	59,238	47,707
AUGUST	15,229	16,122	13,809	8,514	11,130	9,417	40,168	34,053	38,387	37,597	(26,487)	(24,945)	52,068	46,706
SEPTEMBER	15,961	-	13,609	-	11,195	-	40,764	0	42,998	-	(24,130)	0	59,632	0
OCTOBER	16,015	-	10,319	-	11,976	-	38,310	0	42,097	-	(22,369)	0	58,037	0
NOVEMBER	15,059	-	8,252	-	8,226	-	31,537	0	39,996	-	(20,291)	0	51,242	0
DECEMBER	15,183	-	7,214	-	7,175	-	29,572	0	46,273	-	(20,053)	0	55,792	0
JANUARY	13,852	-	10,095	-	7,541	-	31,488	0	35,051	-	(22,858)	0	43,681	0
FEBRUARY	14,019	-	8,564	-	7,728	-	30,311	0	33,708	-	(21,401)	0	42,618	0
MARCH	15,635	-	8,980	-	8,660	-	33,275	0	36,818	-	(23,979)	0	46,114	0
APRIL	15,361	-	11,353	-	9,822	-	36,536	0	36,472	-	(25,599)	0	47,409	0
MAY	14,882	-	8,199	-	7,847	-	30,928	0	31,209	-	(20,326)	0	41,811	0
JUNE	16,507	-	9,455	-	9,264	-	35,226	0	35,058	-	(22,351)	0	47,933	0
YEAR-TO-DATE TOTALS:	184,761	32,361	120,526	16,799	111,277	19,642	416,565	68,801	464,520	76,433	(275,510)	(50,821)	605,576	94,413
FULL YEAR TOTALS:	184,761	32,361	120,526	16,799	111,277	19,642	416,565	68,801	464,520	76,433	(275,510)	(50,821)	605,576	94,413

Financial Review – August 2021



Financial Review – August 2021



Financial Review – August 2021

